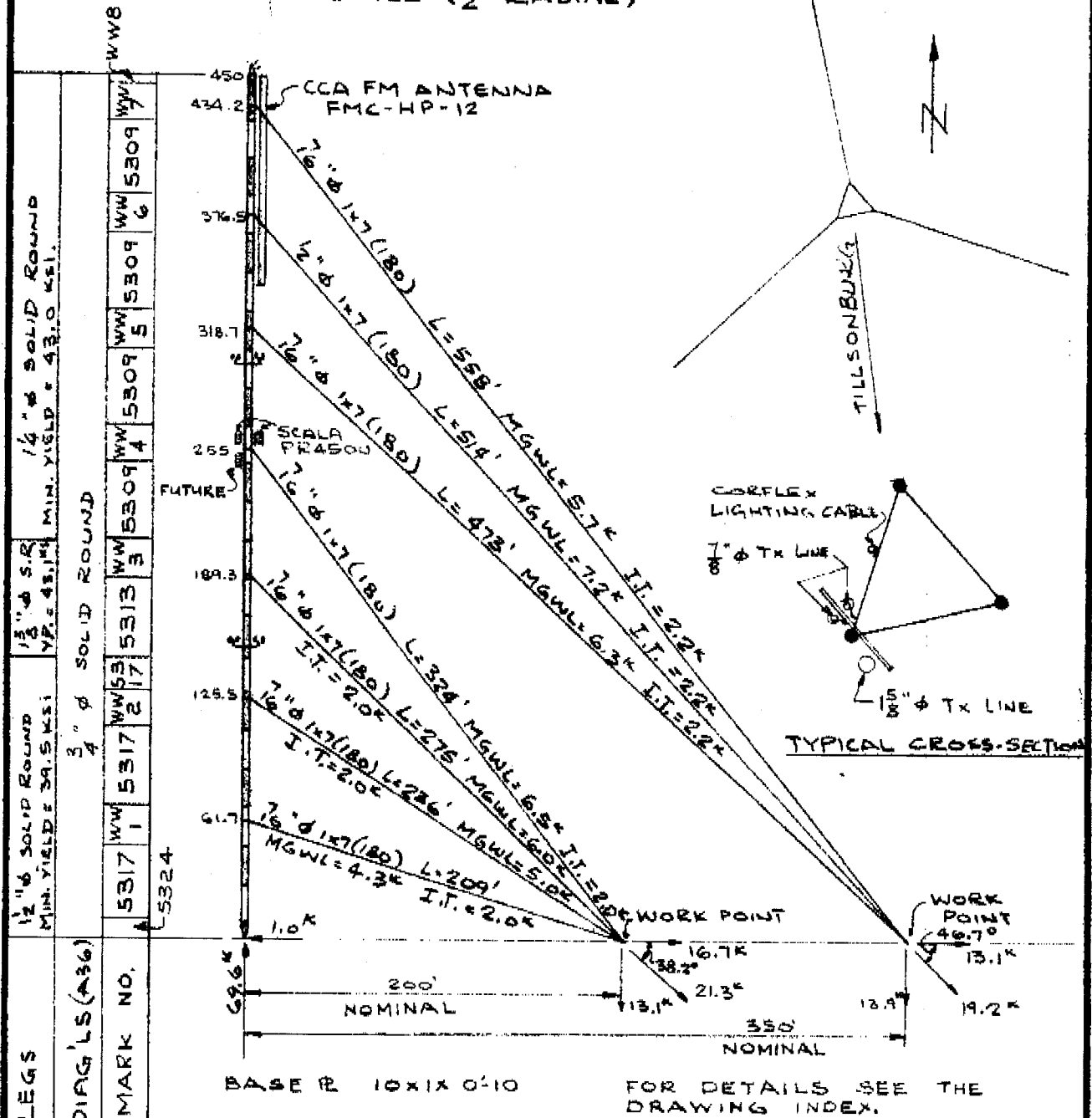


DESIGNED IN ACCORDANCE WITH CSA SPEC. 537-1965

LOADING: CLASS A WIND (30/20 PSF)
 CLASS F ICE (1/2" RADIAL)



LEGS	12" ϕ SOLID ROUND MIN. YIELD = 39.5 KSI	13" ϕ S.R. MIN. YIELD = 43.0 KSI	14" ϕ SOLID ROUND MIN. YIELD = 43.0 KSI
DIAG. L.S. (A36)	3" ϕ SOLID ROUND		
MARK NO.	5317 5317 5317 5317 5309 5309 5309 5309	5313 5309 5309 5309 5309 5309 5309 5309	5309 5309 5309 5309 5309 5309 5309 5309

LeBlanc & Royle

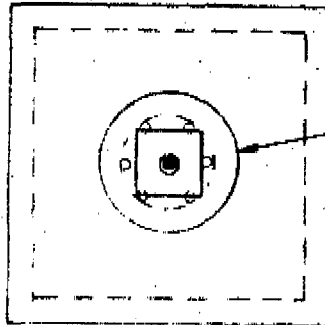
450' 3B SERIES MAST

1 APRIL
 GENERAL REV. & MARK ADDED

SCALE	DRAWING NO.	15511
1" = 80'	334	

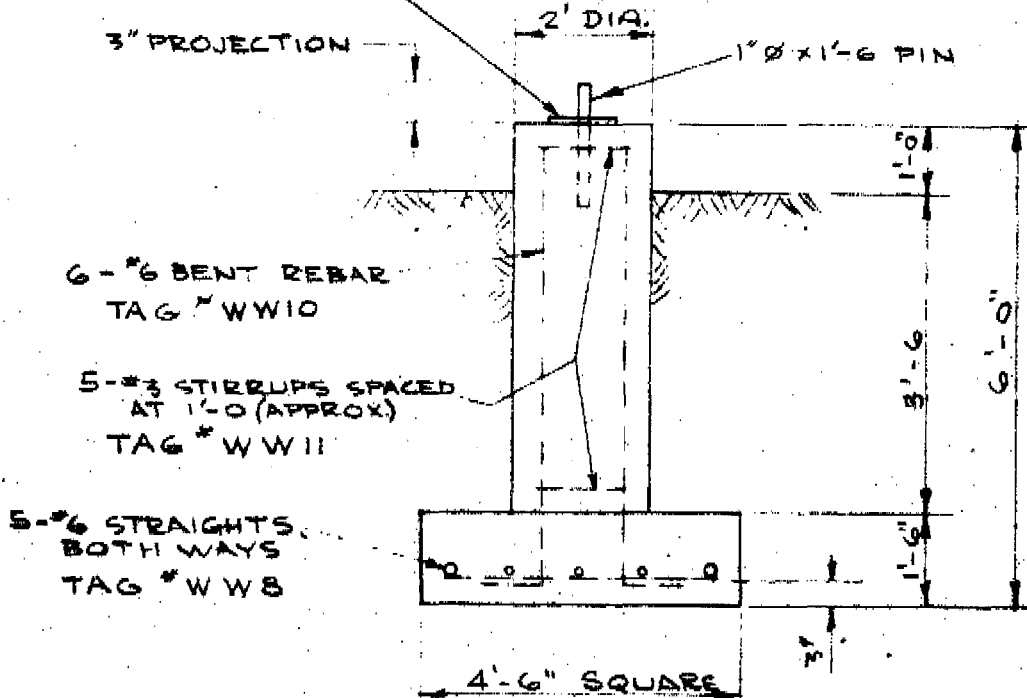
REV. NO.	DATE	DESCRIPTION
0	APRIL	GENERAL REV. & MARK ADDED
		DRAWN JMD CHECKED DATE

ESTIMATED VOLUME OF CONCRETE = 1.7 CU YD.



FORM WITH SONOTUBE OR EQUIVALENT.

NOTE:
 BASE PLATE TO BE LEVEL
 IN ALL DIRECTIONS.
 USE NON SHRINK GROUT
 IF PLACED AFTER
 CONCRETE HAS SET.



6 - #6 BENT REBAR
 TAG # WW10

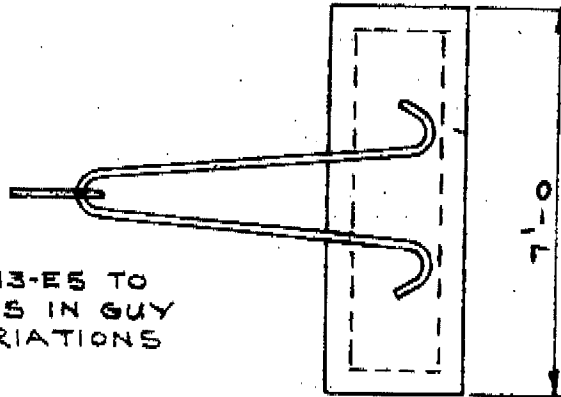
5 - #3 STIRRUPS SPACED
 AT 1'-0 (APPROX)
 TAG # WW11

5 - #6 STRAIGHTS
 BOTH WAYS
 TAG # WW8

- NOTES**
1. CONCRETE IS TO HAVE A MINIMUM COMPRESSIVE STRENGTH OF 3000 P.S.I. AT 28 DAYS.
 2. REINFORCED CONCRETE CONSTRUCTION AND MATERIAL SHALL BE IN ACCORDANCE WITH C.S.A. STANDARD A23.1.
 3. MINIMUM CONCRETE COVER OVER REBAR IS 3".
 4. POUR CONCRETE PAD ON UNDISTURBED SOIL.

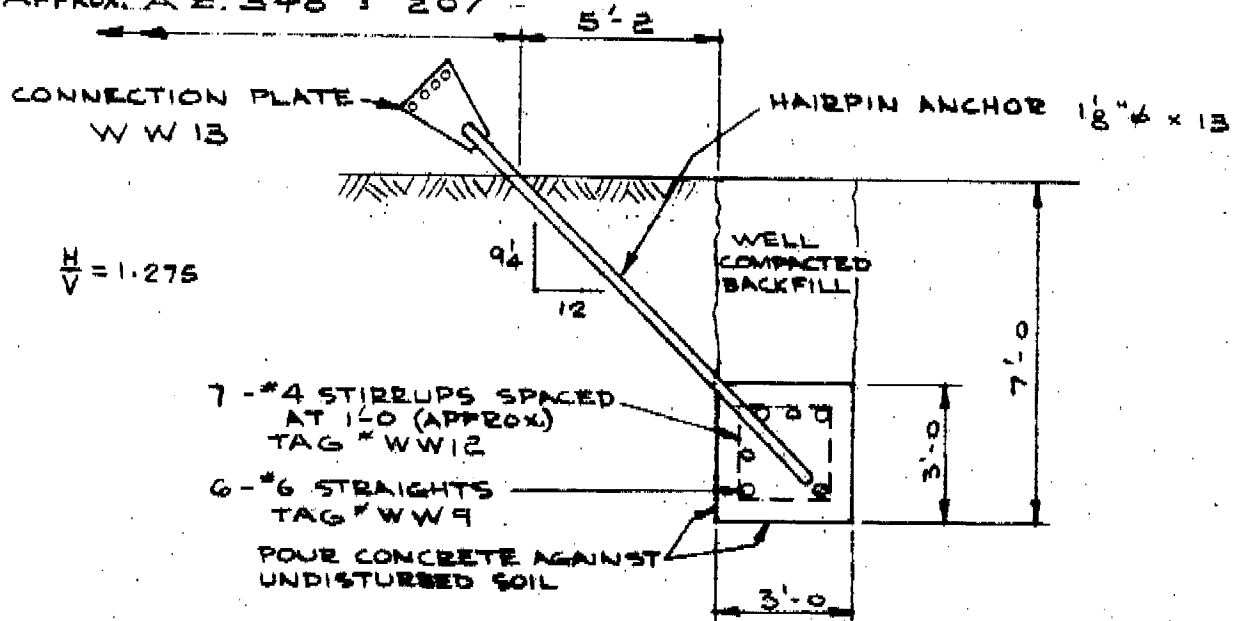
				LeBlanc & Royce	
				CALDWELL A/V EQUIP. CO. LTD.	
				TOWER FOUNDATION	
1	10/11	MARK NO. ADDED <i>GD</i>		SCALE	DRAWING NO.
0	10/11	DRAWN <i>JD</i>	CHECKED	DATE	NO. OF SHEETS
REV. NO.	DATE	DESCRIPTION		NTS.	33A

ESTIMATED VOLUME OF CONCRETE = 2.3 cu. yd.



SEE DRAWING 33A1013-E5 TO
 CALCULATE CHANGES IN GUY
 RADIUS DUE TO VARIATIONS
 IN GROUND LEVEL

APPROX. AZ. 108° = 200'
 APPROX. AZ. 228° = 206'
 APPROX. AZ. 348° = 207'



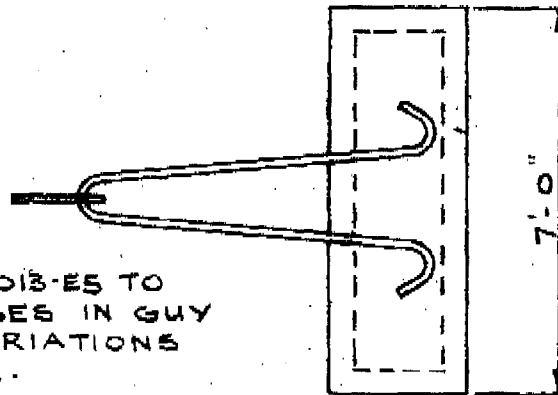
$\frac{H}{V} = 1.275$

NOTES

1. CONCRETE IS TO HAVE A MINIMUM COMPRESSIVE STRENGTH OF 3000 P.S.I. AT 28 DAYS
2. REINFORCED CONCRETE CONSTRUCTION AND MATERIAL SHALL BE IN ACCORDANCE WITH C.S.A. STANDARD A23.1
3. MINIMUM CONCRETE COVER OVER REBAR IS 3"

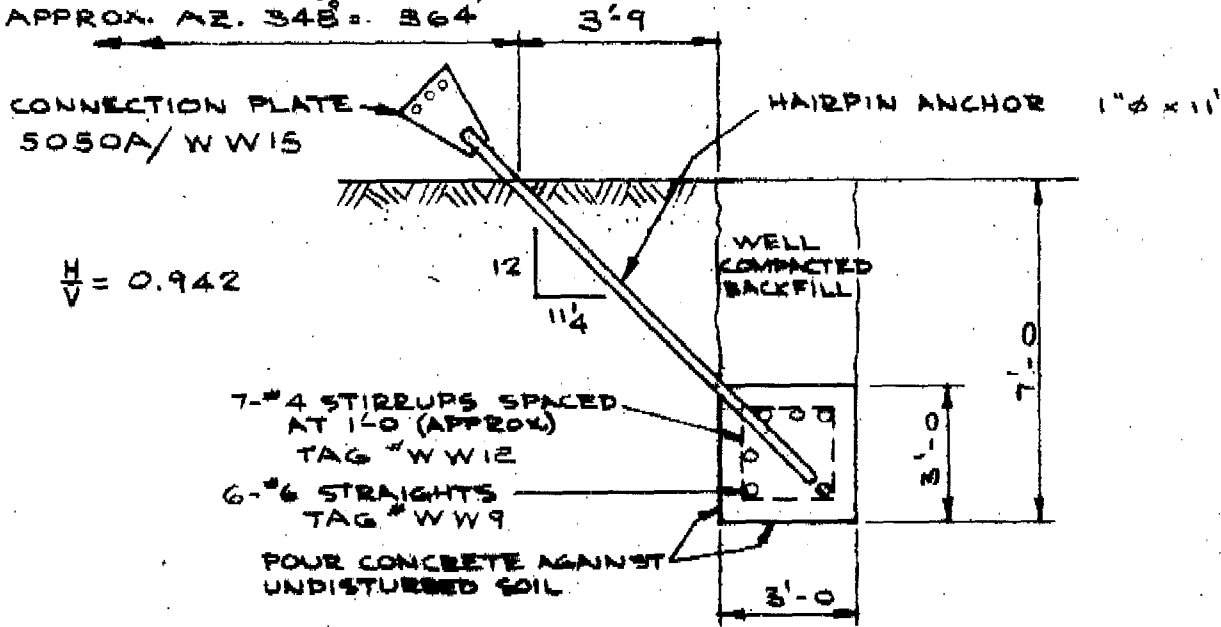
				LeBlanc & Royce		
				INNER ANCHOR		
1	APRIL	MARK NO. ADDED				
0	Δ	DRAWN JD	CHECKED	DATE	SCALE N.T.S.	DRAWING NO.
REV. NO.	DATE	DESCRIPTION				ISSUE
						1

ESTIMATED VOLUME OF CONCRETE = 2.3 CU. YD.



SEE DRAWING 35A1013-E5 TO
 CALCULATE CHANGES IN GUY
 RADIUS DUE TO VARIATIONS
 IN GROUND LEVEL.

APPROX. AZ. 108° = 350'
 APPROX. AZ. 228° = 364'
 APPROX. AZ. 348° = 364'



$\frac{H}{V} = 0.942$

- NOTES**
1. CONCRETE IS TO HAVE A MINIMUM COMPRESSIVE STRENGTH OF 3000 P.S.I. AT 28 DAYS
 2. REINFORCED CONCRETE CONSTRUCTION AND MATERIAL SHALL BE IN ACCORDANCE WITH C.S.A. STANDARD A23.1
 3. MINIMUM CONCRETE COVER OVER REBAR IS 3"

				LeBlanc & Royce			
				CALDWELL A/V EQUIP. CO. LTD. OUTER ANCHOR			
1	1	DRAWN JD	CHECKED	DATE	SCALE N.T.S.	DRAWING NO.	
REV. NO.	DATE	DESCRIPTION					ISSUE 1

BAR LIST FOR REINFORCING STEEL

TAG NO.	BAR SIZE	TYPE	TOTAL LENGTH OF BAR	BENDING DIAGRAM	QTY. REQ'D.
WW 8	#6	STRAIGHT	4'-0		10
WW 9	#6	STRAIGHT	6'-6		36
WW 10	#6	BENT	6'-4		6
WW 11	#3	STIRRUPS	5'-1/2		8
WW 12	#4	STIRRUPS	10'-8		42

GENERAL NOTES:

- EMBEDDED STRUCTURAL ANCHOR STEEL SUPPLIED BY 'LE-BLANC & ROYLE. ALL OTHER MATERIAL TO BE SUPPLIED BY FOUNDATION CONTRACTOR.
- REINFORCING MATERIAL SHALL BE IN ACCORDANCE WITH C.S.A. STANDARD A23.1.

DRAWN <i>DR</i>	DATE -	TITLE	DRAWING NO. 33A	ISSUE 0
CHECKED	2/			

LeBlanc & Royle Communications Towers Ltd.

OAKVILLE

ONTARIO

FILE NO.

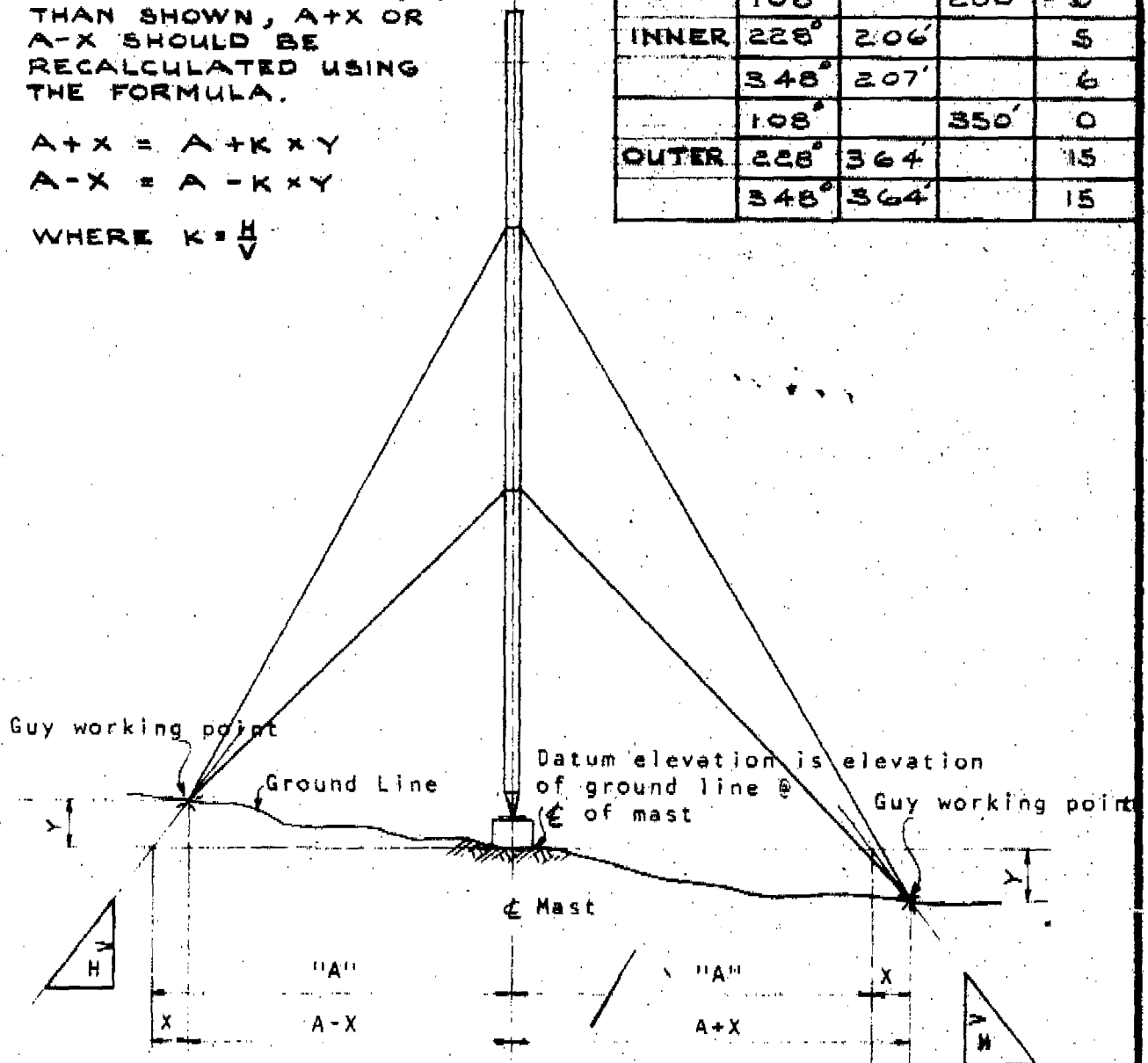
NOTE:
IF ACTUAL GROUND ELEVATION IS DIFFERENT THAN SHOWN, A+X OR A-X SHOULD BE RECALCULATED USING THE FORMULA.

$$A+X = A + K \times Y$$

$$A-X = A - K \times Y$$

WHERE $K = \frac{H}{V}$

ANCHOR	APPROX AZ.	A+X	A-X	Y
	108°		200'	0
INNER	228°	206'		5
	348°	207'		6
	108°		350'	0
OUTER	228°	364'		15
	348°	364'		15



Dimension "A" to be obtained from design sheet.

DIAGRAM FOR USE IN LOCATING GUY ANCHORAGES

				<i>LeBlanc & Royle</i>				
REV. NO.		DATE		DESCRIPTION		SCALE N.T.S.	DRAWING NO. 33A	ISSUE 0



ACKNOWLEDGEMENT

EMR Corporation
 22402 N 19th Ave.
 Phoenix, AZ 85027
 623-581-2875 800-796-2875
 Fax: 623-582-9499
 E-mail: sales@emr.com

SOLD TO:
 BROADCAST COMPONENTS INC.
 44 ELIZABETH ST.
 ALLISTON, ON L9R 1H7
 CANADA
 Phone: 905-729-5100 Fax: 705-434-0075

SHIP TO:
 CKOT RADIO
 Attn: JOHN LAMERS, PRESIDENT
 77 BROADWAY STREET
 TILLSONBURG, ON N4G 4H3
 CANADA
 Phone: 905-729-5100 Fax: 705-434-0075

Contact Phone: 9057295100

Sales Order	Ship No.	Cust No	Order Date	Tax	Est. Ship Date	P. O. Number	Mark Shipment
0051633	0000	BCI	10/26/07	E	11/26/07	542	
Order Entry	Salesman	F.O.B.	Ship Date	Shipped Via	Terms	Waybill Number	Ins
MICHELLE	-NoSalesman	ORIGIN	//	UPSGround	PREPAID		N

Item	T	QUANTITY			Unit	Part Number	Description	Unit Price \$	Dis. %	Extended Amount \$
		Order	B/O	Ship						
001	S	1			EA	FM26321	1,935.00	33.00	1,296.45	
							Order SubTotal			1,296.45
							Total Order Amount			1,296.45

Thank you for your order. Please review this information carefully and contact us immediately if any corrections are required. Note that this is an acknowledgement of receipt and additional technical information may be required. Please sign below and e-mail or fax back.

Signature: _____