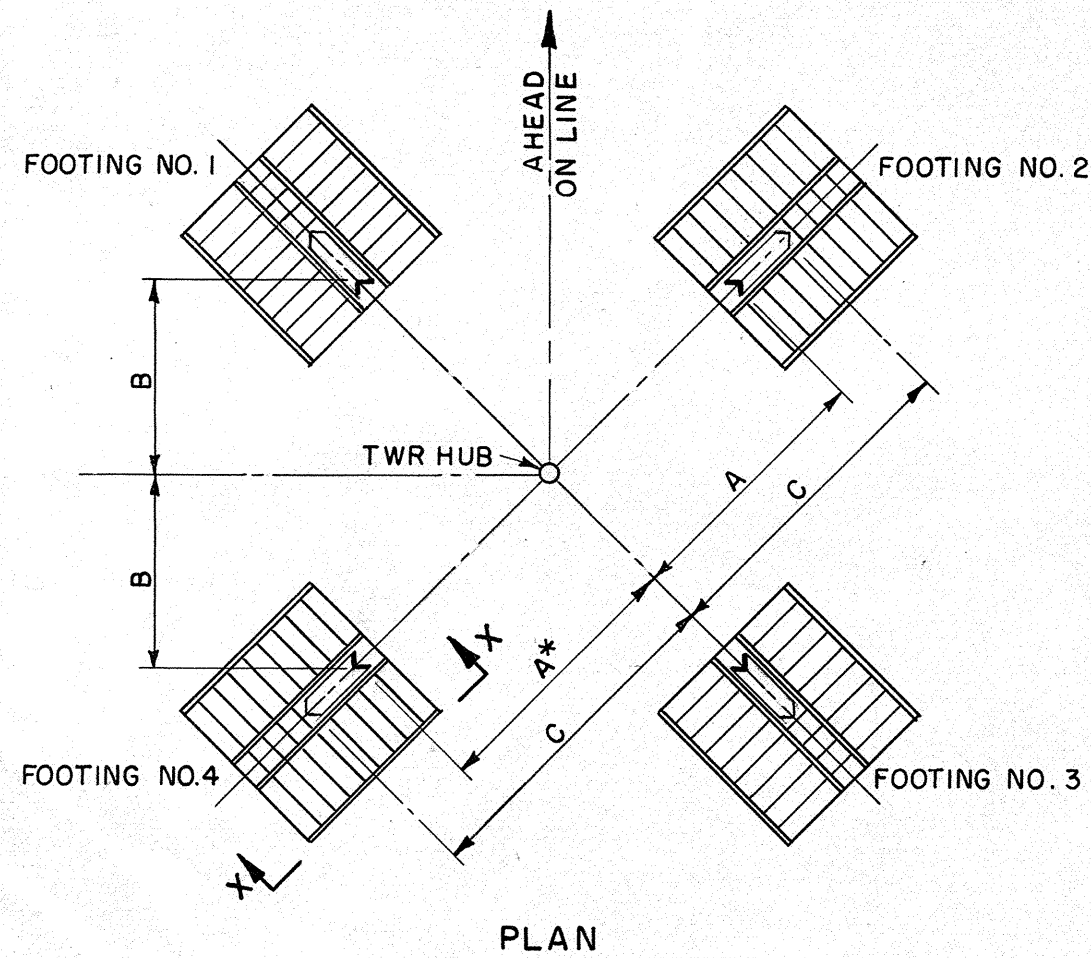
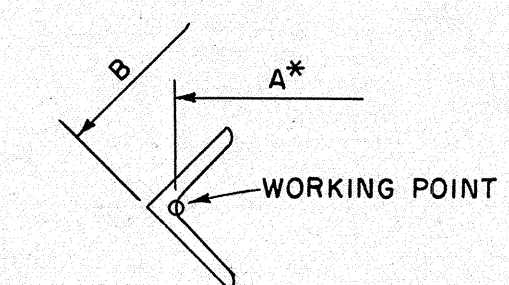


ELEVATION X-X



PLAN



\* WORKING POINT DETAIL

ANCHOR SETTING DIMENSIONS

LEG EXT.	DIMENSIONS FOR 46' BODY				DIMENSIONS FOR 61' BODY				DIMENSIONS FOR 81' BODY			
	GRILL & ROCK		GRILL	ROCK	GRILL & ROCK		GRILL	ROCK	GRILL & ROCK		GRILL	ROCK
	A	B	C	C	A	B	C	C	A	B	C	C
0-0	12.172	8.673	14.610									
2-6	12.644	9.007	15.081									
5-0	13.115	9.340	15.553									
7-6	13.583	9.671	16.020		16.316	11.603	18.753					
10-0	14.054	10.004	16.492		16.787	11.936	19.225					
12-6	14.526	10.337	16.963		17.258	12.270	19.696		20.926	14.863	23.364	
15-0	14.993	10.668	17.431		17.726	12.600	20.164		21.394	15.194	23.832	
17-6	15.465	11.002	17.903		18.197	12.934	20.635		21.866	15.528	24.303	
20-0	15.936	11.335	18.374		18.669	13.267	21.107					
22-6	16.408	11.668	18.845									
25-0	16.875	12.000	19.313									
27-6									23.748	16.858	26.185	
30-0												
32-6												
35-0												
37-6												
40-0												
42-6												
45-0												
47-6												

NOTES:  
 SETTING DIMS. IN FEET  
 DRAWINGS NOT TO SCALE  
 FOOTING DESIGN DWG. C165-344-017  
 SERIAL 15057  
 SUPERSEDES SER. 18601

1	ADD 27' TO 81	DLL	8-31-60	
NO	REVISION	BY	DATE	APPROVED
REDRAWN	SUPERSEDES DWG. SER. 18601 DATED 2-28-42 & DWG SER 18594 DATED 2-25-42	DGW	5-29-58	

UNITED STATES DEPARTMENT OF THE INTERIOR  
 BONNEVILLE POWER ADMINISTRATION  
 HEADQUARTERS, PORTLAND, OREGON

ANCHOR SETTING DIMENSIONS  
 115 KV DC TOWERS MWT= 9,000 LBS  
 TYPE DI TOWERS  
 GRILLAGE & ROCK FOOTINGS

Dr. MWB	Sub. F W F	APPROVED:
Rec. E L W		S. E. SCHULTZ
Ck. J A J	Rec. E J	Date 2-25-42 Design Engineer
	Section Chief	Date 5-29-58 Sh 1 of 1
Ser. 18594		Dwg. 00-344-F19

6  
3