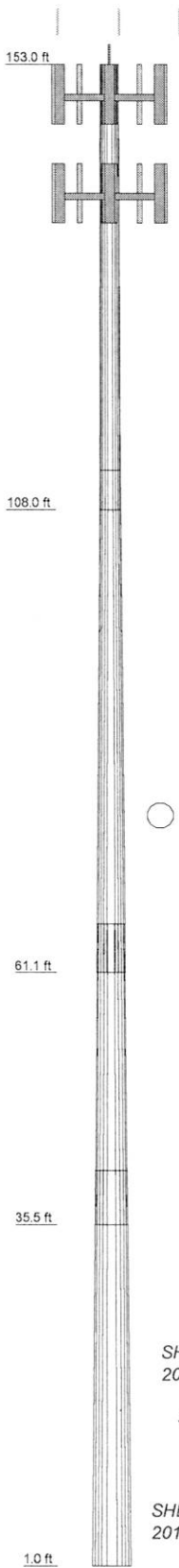


Section	1	2	3	4	
Length (ft)	45.00	50.92	30.50	40.00	1471.9
Number of Sides	12	12	12	12	
Thickness (in)	0.1875	0.2500	0.2500	0.3125	
Socket Length (ft)	4.00	4.92	5.50	37.0105	
Top Dia (in)	22.0000	24.3392	32.5539	45.0000	
Bot Dia (in)	24.9790	33.9860	38.6010	5573.4	
Grade		A572-65			
Weight (lb)	2154.3	4032.8	2951.5	5573.4	



DESIGNED APPURTENANCE LOADING

TYPE	ELEVATION	TYPE	ELEVATION
Generic Lightning Rod 4' copper	153	(3) 75.5"x10.5"x5.5" Panel Antenna	140
(3) 75.5"x10.5"x5.5" Panel Antenna	150	(3) 75.5"x10.5"x5.5" Panel Antenna	140
(3) 75.5"x10.5"x5.5" Panel Antenna	150	(3) 75.5"x10.5"x5.5" Panel Antenna	140
(3) 75.5"x10.5"x5.5" Panel Antenna	150	(2) TMA ETT19VS12UB	140
(2) TMA ETT19VS12UB	150	(2) TMA ETT19VS12UB	140
(2) TMA ETT19VS12UB	150	(2) TMA ETT19VS12UB	140
(2) TMA ETT19VS12UB	150	Std. 10' LP Platform	140
Std. 10' LP Platform	150		

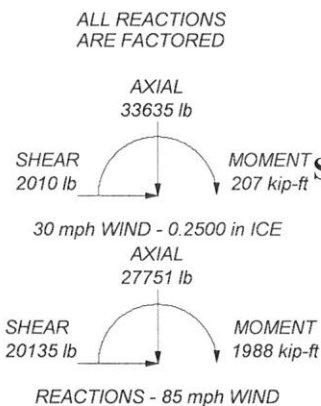
MATERIAL STRENGTH

GRADE	Fy	Fu	GRADE	Fy	Fu
A572-65	65 ksi	80 ksi			

TOWER DESIGN NOTES

1. Tower is located in Pierce County, Washington.
2. Tower designed for Exposure C to the TIA-222-G Standard.
3. Tower designed for a 85 mph basic wind in accordance with the TIA-222-G Standard.
4. Tower is also designed for a 30 mph basic wind with 0.25 in ice. Ice is considered to increase in thickness with height.
5. Deflections are based upon a 60 mph wind.
6. Tower Structure Class II.
7. Topographic Category 1 with Crest Height of 0.00 ft
8. Tower members are "hot dipped" galvanized in accordance with ASTM A123 and ASTM A153 Standards.
9. Welds are fabricated with ER-70S-6 electrodes.
10. TOWER RATING: 99.4%

Preliminary Design



BASE PLATE: 2.5" x 65.3" ROUND (60 KSI)
 ANCHOR BOLTS: (16) 2.25" DIA ON 59.3" B.C

Harrison
 Site Name: Pioneer Way: 47 13' 45", -122 23' 31.42"
160-Ft. Monopole
 2721 Pioneer Way East Tacoma, WA
 Peirce County

5095

DaVinci Engineering, Inc.		Job: 9911256-190	
PO Box 1966		Project: 160-Ft Monopole	
Santa Maria, CA 93456		Client: Harrison; Pioneer Way	Drawn by: Simon Leland
Phone: (805) 922-5221		Code: TIA-222-G	Date: 12/08/11
FAX: (805) 880-0402		Scale: NTS	Dwg No. E-1