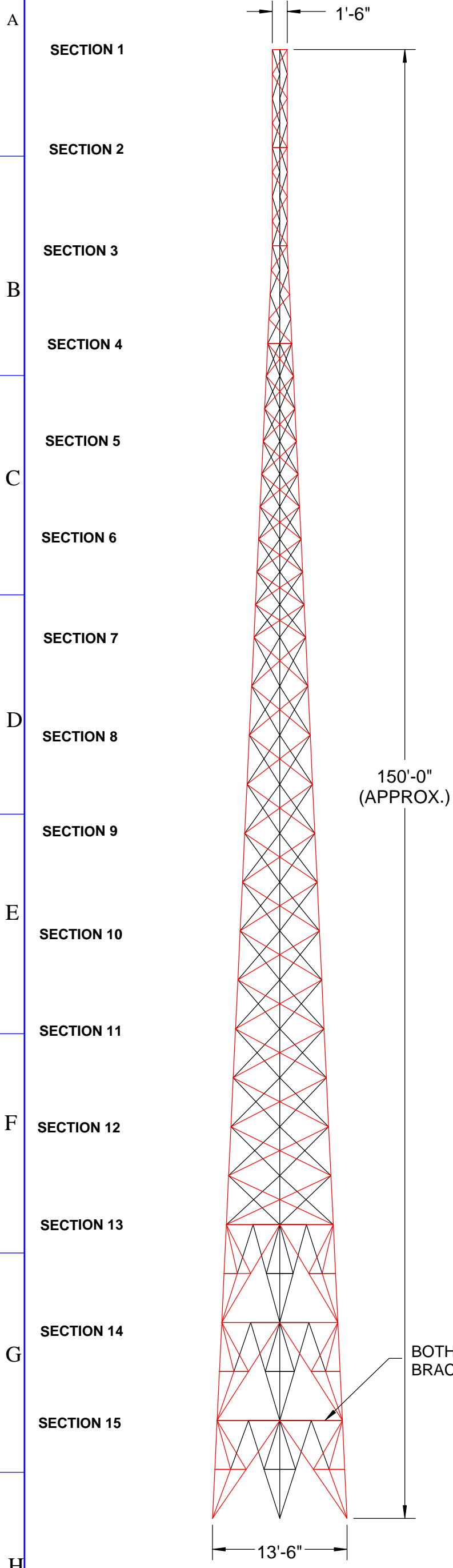


The information contained in this drawing is the sole property of Glen Martin Engineering, Inc. any reproduction in part or whole without the written permission of Glen Martin Engineering, Inc. is strictly prohibited.

REVISIONS			
REV.	DESCRIPTION	DATE	APPROVED



SEC.	LEG SIZES		BRACE DESIGN	BRACE SIZES A-36 (IN)
	MIN. YIELD STRENGTH (ksi)	SIZE (IN)		
1	65	1100LEG (.79 sq. in.)	4Z	1"x1"x1/8"
2	65	1100LEG (.79 sq. in.)	4Z	1"x1"x1/8"
3	65	1100LEG (.79 sq. in.)	4Z	1-1/4"x1-1/4"x3/16"
4	65	1200LEG (.89 sq. in.)	3X	1-1/2"x1-1/2"x3/16"
5	65	1200LEG (.89 sq. in.)	3X	1-1/2"x1-1/2"x3/16"
6	65	1200LEG (.89 sq. in.)	3X	1-1/2"x1-1/2"x3/16"
7	65	1300LEG (1.44 sq. in.)	2X	1-3/4"x1-3/4"x3/16"
8	65	1300LEG (1.44 sq. in.)	2X	1-3/4"x1-3/4"x3/16"
9	65	1300LEG (1.44 sq. in.)	2X	1-3/4"x1-3/4"x3/16"
10	65	1400LEG (1.68 sq. in.)	2X	2-1/2"x2-1/2"x1/4"
11	65	1400LEG (1.68 sq. in.)	2X	2-1/2"x2-1/2"x1/4"
12	65	1400LEG (1.68 sq. in.)	2X	2-1/2"x2-1/2"x1/4"
13	65	1500LEG (2.46 sq. in.)	K	2"x2-"x1/4"
14	65	1500LEG (2.46 sq. in.)	K	2"x2-"x1/4"
15	65	1500LEG (2.46 sq. in.)	K	2"x2-"x1/4"

GENERAL NOTES:


- 1) TOTAL STRUCTURE WEIGHT: 6,700 lbs.
- 2) GALVANIZED FINISH- ASTM A-123.
- 3) TOWER DESIGN CRITERIA: EIA/TIA-222F
- 4) THE TOWER MEETS FOLLOWING DESIGN UNDER THE FOLLOWING MAXIMUM CONDITIONS:
 - 1) 90 MPH WIND 0 DEGREES.
 - 2) 90 MPH WIND 180 DEGREES.
- 5) MAXIMUM REACTION LOADS AT BASE:

SHEAR/LEG: 6.9 KIPS
 VERTICAL UPWARD: 48.14 KIPS
 VERTICAL DOWNWARD: 69.13 KIPS

OTM: 709 FT KIPS
 TOTAL SHEAR: 13.54 KIPS
 AXIAL: 7.5 KIPS

OTM: 283 FT KIPS
 AXIAL: 5.39 KIPS
 TOTAL SHEAR: 6.77 KIPS

BOTH HORIZONTAL AND DIAGONAL BRACES 2"x2"x1/4"

DO NOT MANUALLY UPDATE CAD GENERATED DRAWING,		Glen Martin Engineering, Inc.  13620 Old Hwy 40 Boonville, MO 65233 Tel: (660) 882-2734 Fax: (660) 882-7200 www.glenmartin.com	
APPROVALS CHECKED DATE			
DRAWN JDB 9/27/02		DWG. NO. MS-0115-0001	MATERIAL HS LOW ALLOY
RESP ENG CJM 9/30/02		FINISH GALVANIZED	SCALE
MFG ENG		CAD FILE:	QTY REQD
			REV. 0 SHEET 1 OF 1