

- 1 CONVENIENCE OUTLETS SHALL BE EQUIPPED WITH GROUND FAULT PROTECTION.
- 2 NO FIXTURES, CONDUITS, ATTACHMENTS, OR WIRES SHALL BE MOUNTED IN THIS AREA.
- 3 WALL PLYWOOD TO BE MINIMUM OF 1 1/2" THICK IN THIS AREA. MINIMUM ADDITIONAL THICKNESS SHALL BE BEHIND THE SURFACE WALL.
- 4 MANUAL POWER TRANSFER SWITCH SQUARE D #82254 OR EQUIVALENT.
- 5 30 POSITION BREAKER PANEL. SQUARE D "QO" SERIES, 200 AMP MAIN BREAKER OR EQUIVALENT.
- 6 ALL UNISTRUT P1000 AND LIGHTS ARE MOUNTED DIRECTLY TO THE CEILING.
- 7 CABLE LADDER TO BE 12 INCHES WIDE AND 8'-3" FROM THE FINISH FLOOR TO THE BOTTOM OF CABLE LADDER.
- 8 AT LOCATION OF ALARM DEVICE LEAVE 14 FEET OF WIRE. AT JUNCTION BOX LEAVE 6 FEET OF WIRE. BOTH ENDS OF WIRE SHALL BE IDENTIFIED AND COILED FOR TERMINATION BY OTHERS.
- 9 WIRE FROM JUNCTION BOX TO ALARM DEVICE. TERMINATE WIRES AT ALARM DEVICE ONLY. AT JUNCTION BOX LEAVE 6 FEET OF WIRE. WIRE SHALL BE IDENTIFIED AND COILED FOR TERMINATION BY OTHERS.
- 10 ALARM WIRING TO BE 22 GAUGE, SOLID, SOFT COPPER WIRE WITH POLYETHYLENE INSULATION AND POLYVINYL CHLORIDE JACKET; BELDEN 8785 (1 PR) 9794 (2 PR) OR EQUIVALENT.
- 11 ALARM WIRING SHALL NOT BE PLACED IN THE SAME CONDUIT AS A/C AND D/C POWER WIRING.
- 12 WIRES FOR BATTERY CHARGERS TO BE RUN TO JUNCTION BOX AND PIGTAILED APPROXIMATELY 14 FEET IN JUNCTION BOX. WIRES WILL BE CONNECTED TO CHARGERS AND DISTRIBUTION BUS BY THE COMMUNICATION EQUIPMENT INSTALLER.
- 13 USE 2/0 AWG, INSULATED, 19 STRAND, SOFT DRAWN COPPER GROUND WIRE FROM EXOTHERMIC WELD ON FRAME; THROUGH ALL ELECTRICAL PANELS. (EQUIPMENT FRAME PROTECTION GROUND).
- 14 SIGNAL REFERENCE GROUND SHALL BE EXOTHERMICALLY WELDED TO THE SKID. USE 2/0 AWG, INSULATED, 19 STRAND, SOFT DRAWN COPPER CABLE. ROUTE CABLE IN DESIGNATED CONDUIT, THEN ALONG CABLE LADDER TO MAKE A COMPLETE LOOP OF THE SHELTER, LEAVING APPROXIMATELY AN EXTRA 8 FEET OF WIRE COILED ON THE CABLE LADDER.
- 15 AIR CONDITIONING AND HEATING UNITS SHALL BE WIRED IN ACCORDANCE WITH THE MANUFACTURER'S INSTALLATION INSTRUCTIONS.
- 16 HVAC UNITS 1 AND 2 MUST BE PROPERLY PHASED TO ASSURE CORRECT 24 VAC TRANSFORMER PHASING. CHECK FOR PROPER LINE VOLTAGE PHASING BY USING AN AC VOLTMETER SET ON 300 VAC SCALE AND MEASURE BETWEEN TERMINAL L1 ON 240V TERMINAL BLOCK ON UNIT 1 AND TERMINAL L1 ON UNIT 2. IF LINE VOLTAGE IS PRESENT, UNITS ARE "OUT OF PHASE". TO CORRECT THIS, POWER DOWN THE UNITS, REVERSE THE PHASE WIRING TO UNIT 2 AND RECHECK. WHEN "0" VOLTS ARE MEASURED, THE UNITS ARE NOW "IN PHASE".
- 17 DC REFERENCE GROUND SHALL BE EXOTHERMICALLY WELDED TO THE SKID. USE #2/0 AWG, INSULATED, 19 STRAND, SOFT DRAWN COPPER CABLE. ROUTE CABLE IN DESIGNATED CONDUIT; THEN ALONG CABLE LADDER TO A POINT ABOVE RACK POSITION (BATTERY CHARGER) LEAVING APPROXIMATELY 8 FEET PIGTAILED ABOVE.
- 18 AT LOCATION OF ALARM DEVICE LEAVE SIX (6) FEET OF WIRE. AT JUNCTION BOX LEAVE FORTY (40) FEET OF WIRE. BOTH END OF WIRE SHALL BE IDENTIFIED AND COILED FOR TERMINATION BY OTHERS.
- 19 FIBER OPTIC CABLE SHIELD GROUND BUS BAR SHALL BE EXOTHERMICALLY CONNECTED TO THE SHELTER SKID. USE 2/0 AWG, INSULATED, 19 STRAND, SOFT DRAWN COPPER CABLE. ROUTE CABLE THROUGH DESIGNATED CONDUIT.

- 20 PROVIDE AND INSTALL 1-15 AMP 2 POLE CIRCUIT BREAKER TO SERVE SURGE PROTECTOR "A" DEVICE. NOTE, NO MORE THAN 10. KIA RATINGS ON BREAKERS.
- 21 WIRE COLOR CODES REQUIRED:
 - 120-V, 3 WIRE CIRCUIT: GROUNDED NEUTRAL-WHITE; HOT LEG-BLACK; EQUIPMENT GROUND-GREEN.
 - 240V, 3-WIRE, SINGLE-PHASE CIRCUIT: ONE HOT LEG-BLACK; THE OTHER HOT LEG-RED; EQUIPMENT GROUND-GREEN

Label & Data Plate (As Req'd) To Be Located On Breaker Panel Cover.

All Junction Boxes To Be Surface Mounted And Grounded.

All Wiring To Be Run In Surface Mounted EMT Or Wireways.

ITEMS NOTED THUS TO BE INSTALLED BY OTHERS: (C)

NOTES:
 Items Under Local Code Authority:
 Foundation Installation
 Electrical Hookup

Items Required Under PART III-28CFR36 To Be Provided By Owner On Site

DRAWING NO.	DESCRIPTION	SHEET NO.
22x30-01	TABLE OF CONTENTS	1 of 15
22x30-02	BILL OF MATERIALS	2 of 15
22x30-03	ISOMETRIC	3 of 15
22x30-04	WALL "A"	4 of 15
22x30-05	WALL "B"	5 of 15
22x30-06	WALL "C"	6 of 15
22x30-07	WALL "D"	7 of 15
22x30-08	FLOOR PLAN	8 of 15
22x30-09	REFLECTED CEILING PLAN	9 of 15
22x30-10	CABLE LADDER PLAN	10 of 15
22x30-11	WIRING SCHEMATIC-PANEL #1	11 of 15
22x30-12	WIRING SCHEMATIC-PANEL #2	12 of 15
22x30-13	ALARM WIRING DIAGRAM	13 of 15
22x30-14	TYPICAL CONSTRUCTION DRAWING	14 of 15
22x30-15	TYPICAL CONSTRUCTION DRAWING	15 of 15



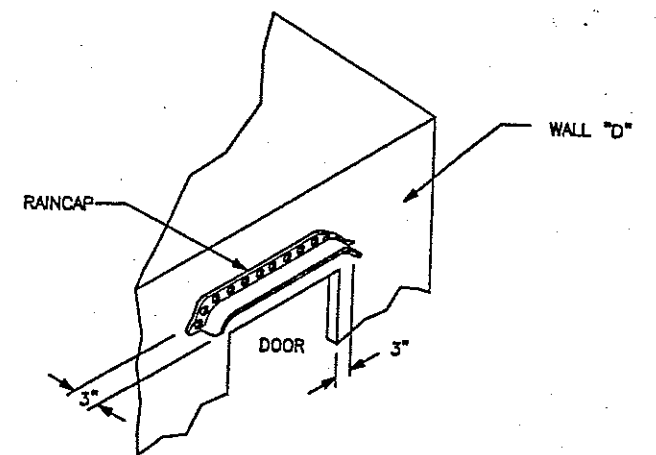
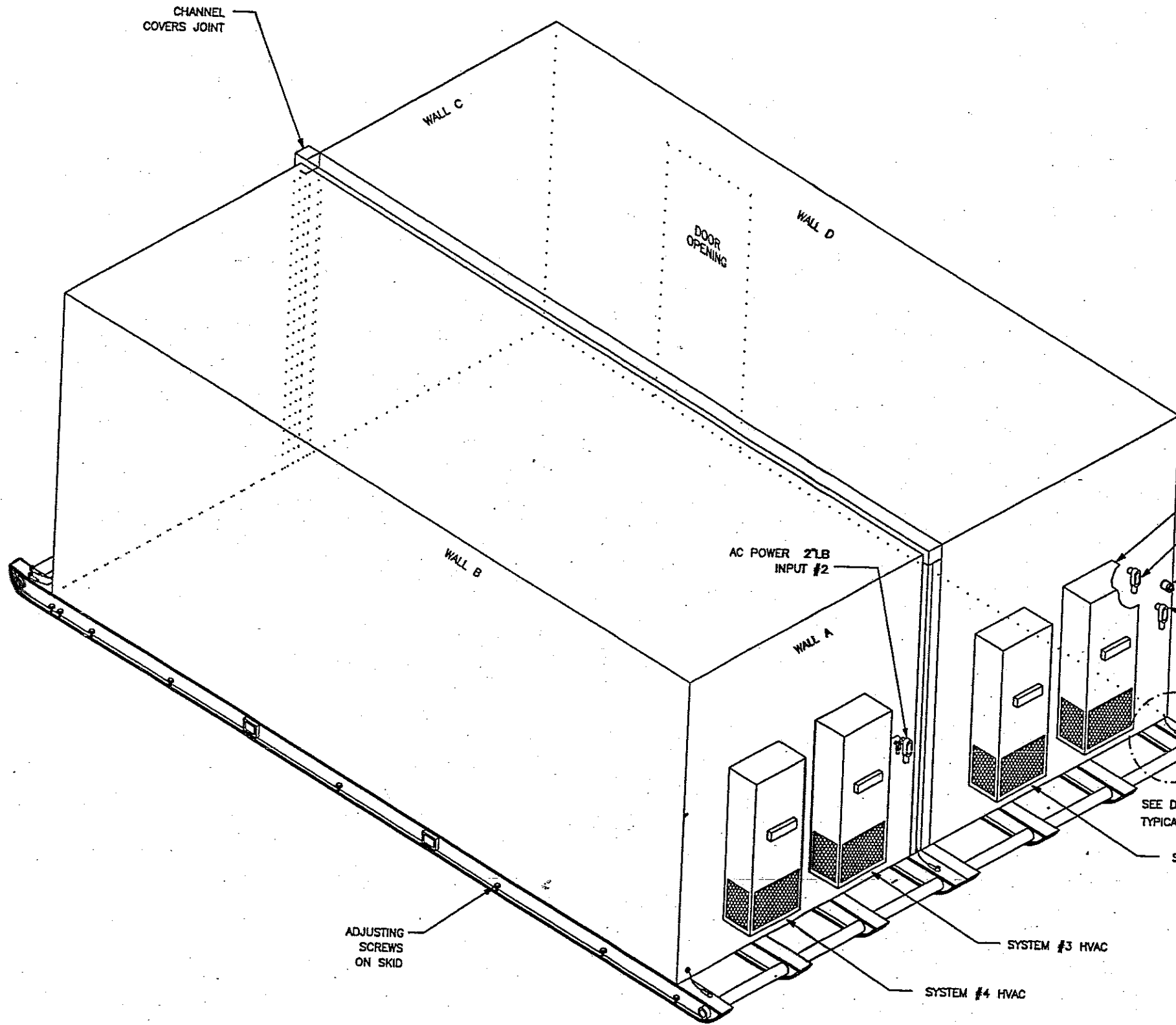
Mechanical Codes:	UMC, '97
Electrical Codes:	NEC, '99
Structural Codes:	UBC, '97
Maximum Wind Load:	100 mph
Floor Loads:	
Dead Loads:	11 psf
Live Loads:	125 psf
Roof Loads:	
Dead Loads:	5.5 psf
Live Loads:	20 psf
Seismic Zone:	Zone 1
Occupancy/use group type:	B4
Construction type:	VI UNP

TABLE OF CONTENTS
 22' x 30' x 9' Sht 1 of 15

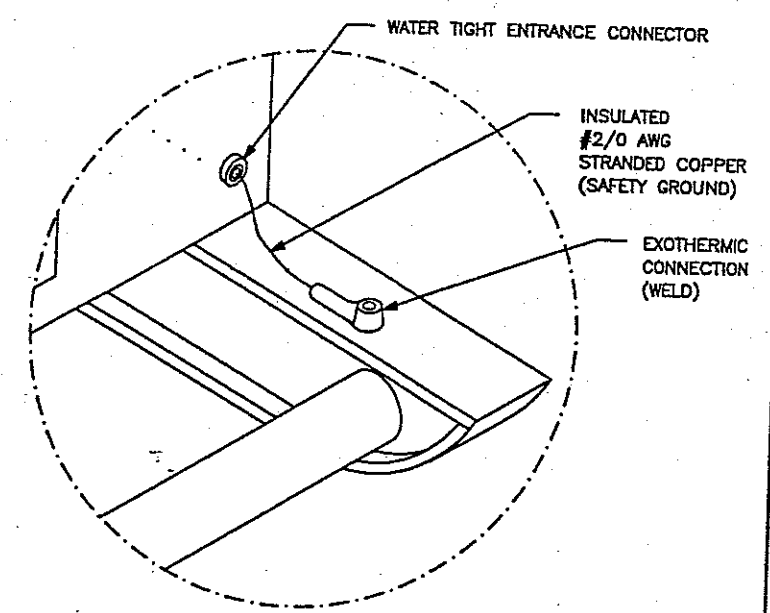
1 PROPRIETARY AND CONFIDENTIAL
 THIS DOCUMENT AND THE INFORMATION
 CONTAINED HEREIN ARE THE SOLE PROPERTY OF
 FWT, INC. DUPLICATION OR DISSEMINATION OF
 THIS INFORMATION WITHOUT PRIOR WRITTEN
 CONSENT OF FWT, INC. IS PROHIBITED.



REV.	DATE	BY	INIT.	DESCRIPTION
		RV		RV
SPECIFIC INFORMATION				CAD FILE: \\FWT_MASTERS\MCL\MCL_22X30X9\APP...22X30-01 KS.DWG\$Y10-JAN-200112:25
DRAWING TITLE				REV.
22' x 30' (9' CLG) EQUIPMENT SHELTER				SCALE: NONE
TABLE OF CONTENTS				DATE: 13-JUL-2000
				SHEET NO. 1 OF 15
				DRAWING NO. 22x30-01



VIEW B-B
SCALE: NONE



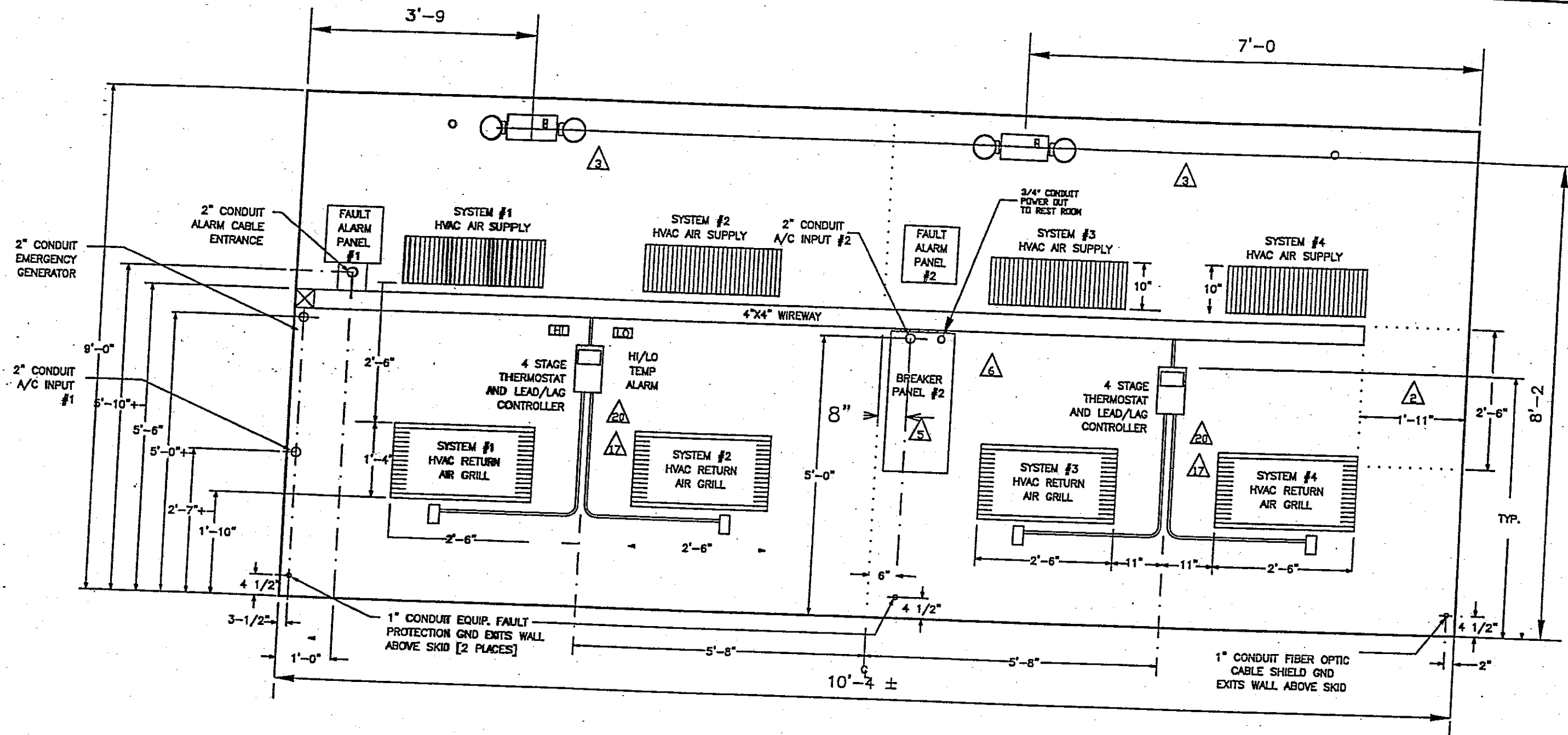
DETAIL "A"
SCALE: NONE

ISOMETRIC VIEW
22' x 30' x 9' Sht 3 of 15

1 PROPRIETARY AND CONFIDENTIAL 1
THIS DOCUMENT AND THE INFORMATION
CONTAINED HEREIN ARE THE SOLE PROPERTY OF
FWT, INC. DUPLICATION OR DISSEMINATION OF
THIS INFORMATION WITHOUT PRIOR WRITTEN
CONSENT OF FWT, INC. IS PROHIBITED.

FWT, Inc.
5750 East I-20
Fort Worth, Texas 76119 U.S.A.
(817) 255-3060 FAX (817) 572-0604

REV.	DATE	BY	INIT.	DESCRIPTION
1		RV		22' x 30' (9' CLG) EQUIPMENT SHELTER
DRAWN BY: RV CHECKED BY: CAD FILE: W:\JOBS\21000-21999\21398000 22X30\22X30-03R1.DWG\RA11-JUL-2000\1626				REV.
SPECIFIC INFORMATION 22' x 30' (9' CLG) EQUIPMENT SHELTER				SCALE: NONE DATE: 22-JUN-2000 SHEET NO. 3 OF 15
DRAWING TITLE ISOMETRIC VIEW				JOB NO. DRAWING NO. 22x30-03



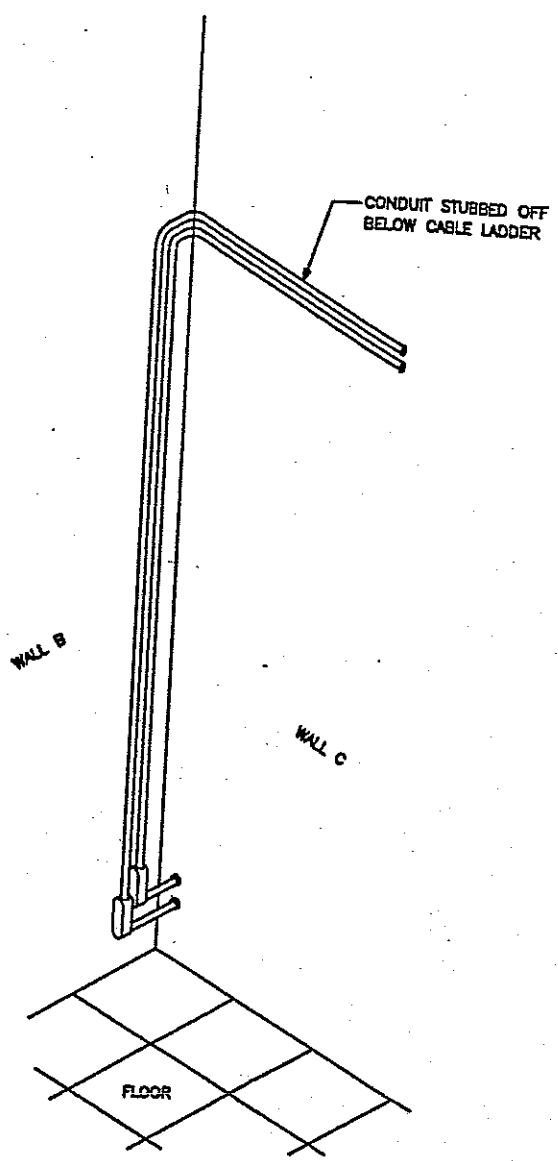
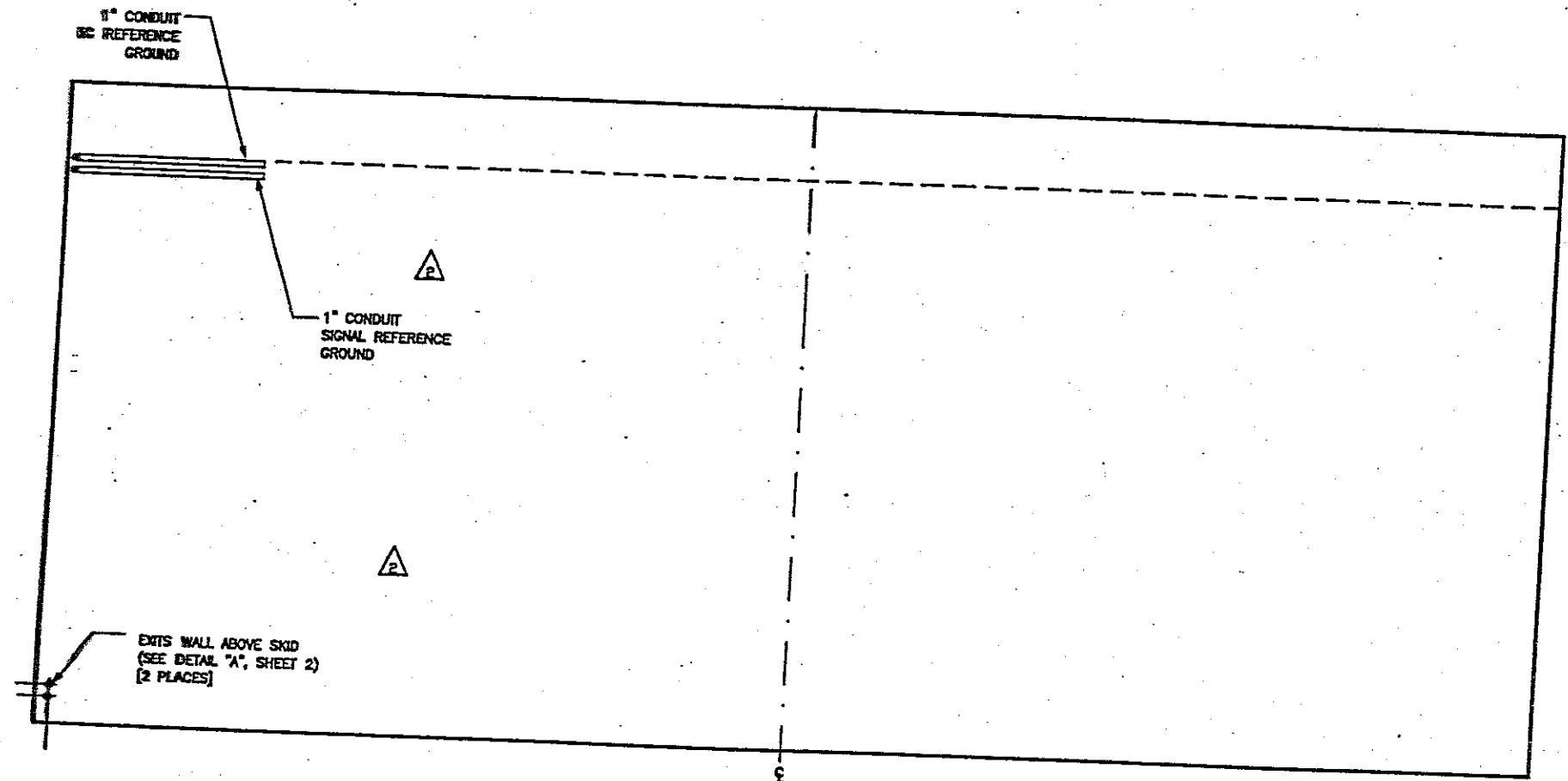
WALL A

INTERIOR WALL ELEVATION
22' x 30' x 9' Sht 4 of 15

I PROPRIETARY AND CONFIDENTIAL
THIS DOCUMENT AND THE INFORMATION
CONTAINED HEREIN ARE THE SOLE PROPERTY OF
FWT, INC. DUPLICATION OR DISSEMINATION OF
THIS INFORMATION WITHOUT PRIOR WRITTEN
CONSENT OF FWT, INC. IS PROHIBITED.

FWT, Inc.
5750 East I-20
Fort Worth, Texas 76119 U.S.A.
(817) 255-3060 FAX (817) 572-0604

REV.	DATE	BY	INIT.	DESCRIPTION
		RV		22' x 30' (9' CLG) EQUIPMENT SHELTER
DRAWING TITLE				INTERIOR WALL
SCALE				NONE
DATE				22-JUN-2000
JOB NO.				
SHEET NO.			4 OF 15	
DRAWING NO.			22x30-04	



ISOMETRIC VIEW
OF 1" CONDUITS

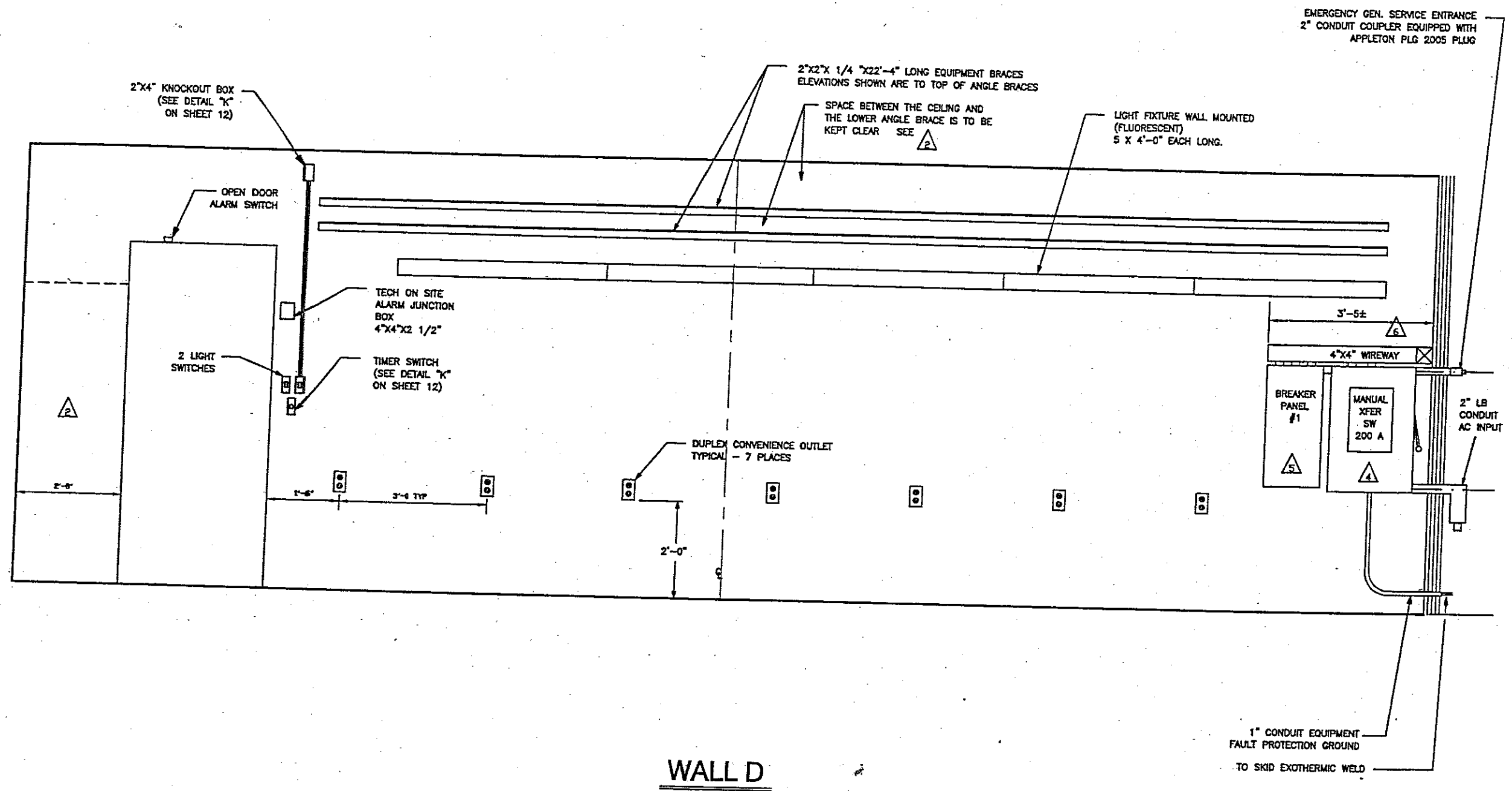
WALL C

INTERIOR WALL ELEVATION
22' x 30' x 9' Sht 6 of 15

1 PROPRIETARY AND CONFIDENTIAL 1
THIS DOCUMENT AND THE INFORMATION
CONTAINED HEREIN ARE THE SOLE PROPERTY OF
FWT, INC. DUPLICATION OR DISSEMINATION OF
THIS INFORMATION WITHOUT PRIOR WRITTEN
CONSENT OF FWT, INC. IS PROHIBITED.

FWT, Inc.
5750 East I-20
Fort Worth, Texas 76119 U.S.A.
(817) 255-3060 FAX (817) 572-0604

REV.	DATE	BY	INIT.	DESCRIPTION
		RV		
SPECIFIC INFORMATION				DESCRIPTION
DRAWING TITLE				DATE
22' x 30' (9' CLG) EQUIPMENT SHELTER				22-JUN-2000
JOB NO.				DRAWING NO.
				22x30-06
				SHEET NO.
				6 OF 15

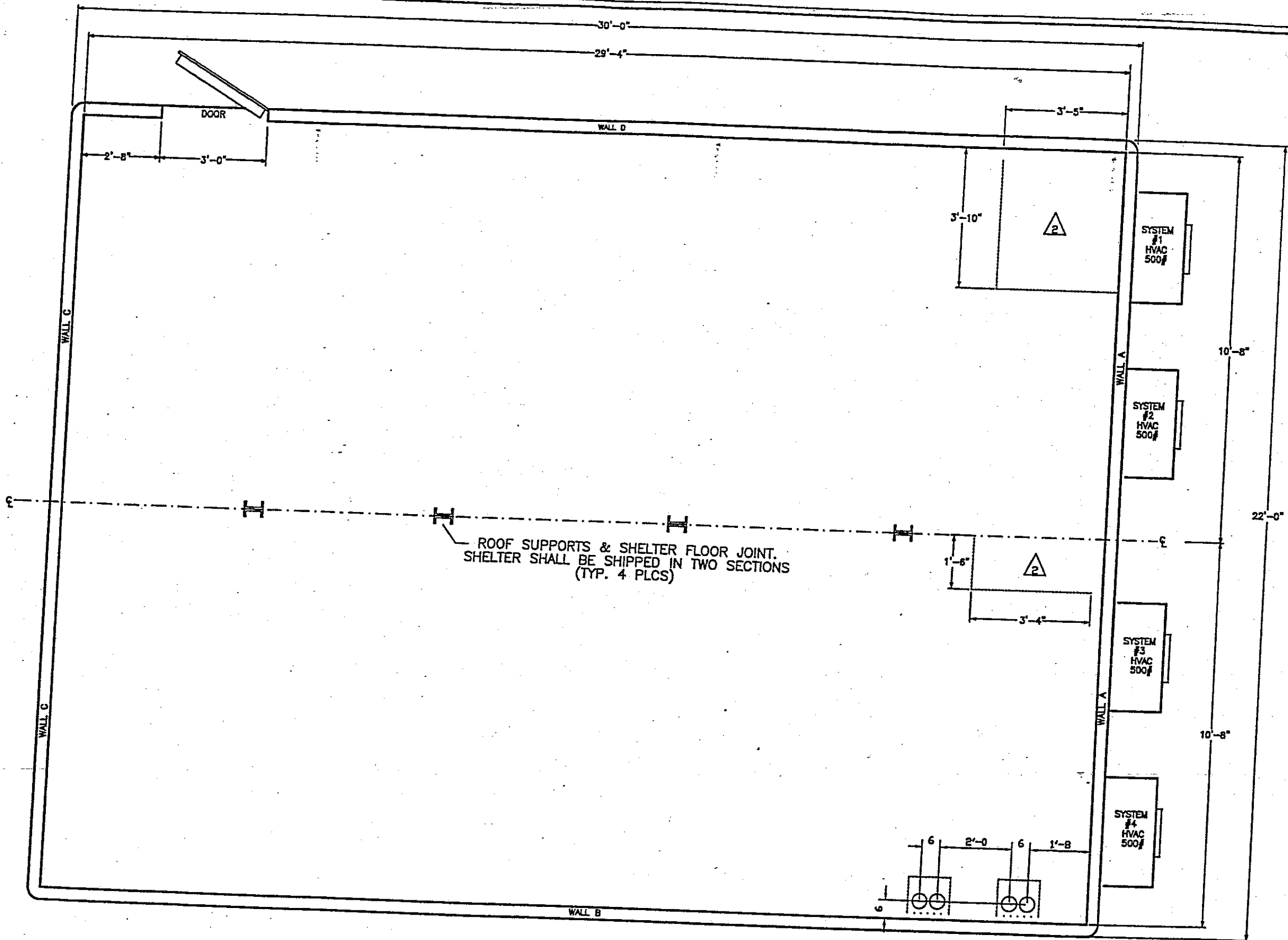


INTERIOR WALL ELEVATION
22' x 30' x 9' Sht 7 of 15

1 PROPRIETARY AND CONFIDENTIAL
THIS DOCUMENT AND THE INFORMATION
CONTAINED HEREIN ARE THE SOLE PROPERTY OF
FWT, INC. DUPLICATION OR DISSEMINATION OF
THIS INFORMATION WITHOUT PRIOR WRITTEN
CONSENT OF FWT, INC. IS PROHIBITED.

FWT, Inc.
5750 East I-20
Fort Worth, Texas 76119 U.S.A.
(817) 255-3060 FAX (817) 572-0604

REV.	DATE	BY	INIT.	DESCRIPTION
		RV		
SPECIFIC INFORMATION				CAD FILE: J:\JOBS\21000-21999\21398000_22X30_22X30-07R1.DWG\RA11-JUL-2000\1629
DRAWING TITLE				SCALE: NONE
22' x 30' (9' CLG) EQUIPMENT SHELTER				SHEET NO. 7 OF 15
DATE: 22-JUN-2000				DRAWING NO. 22x30-07
JOB NO.				



PLAN

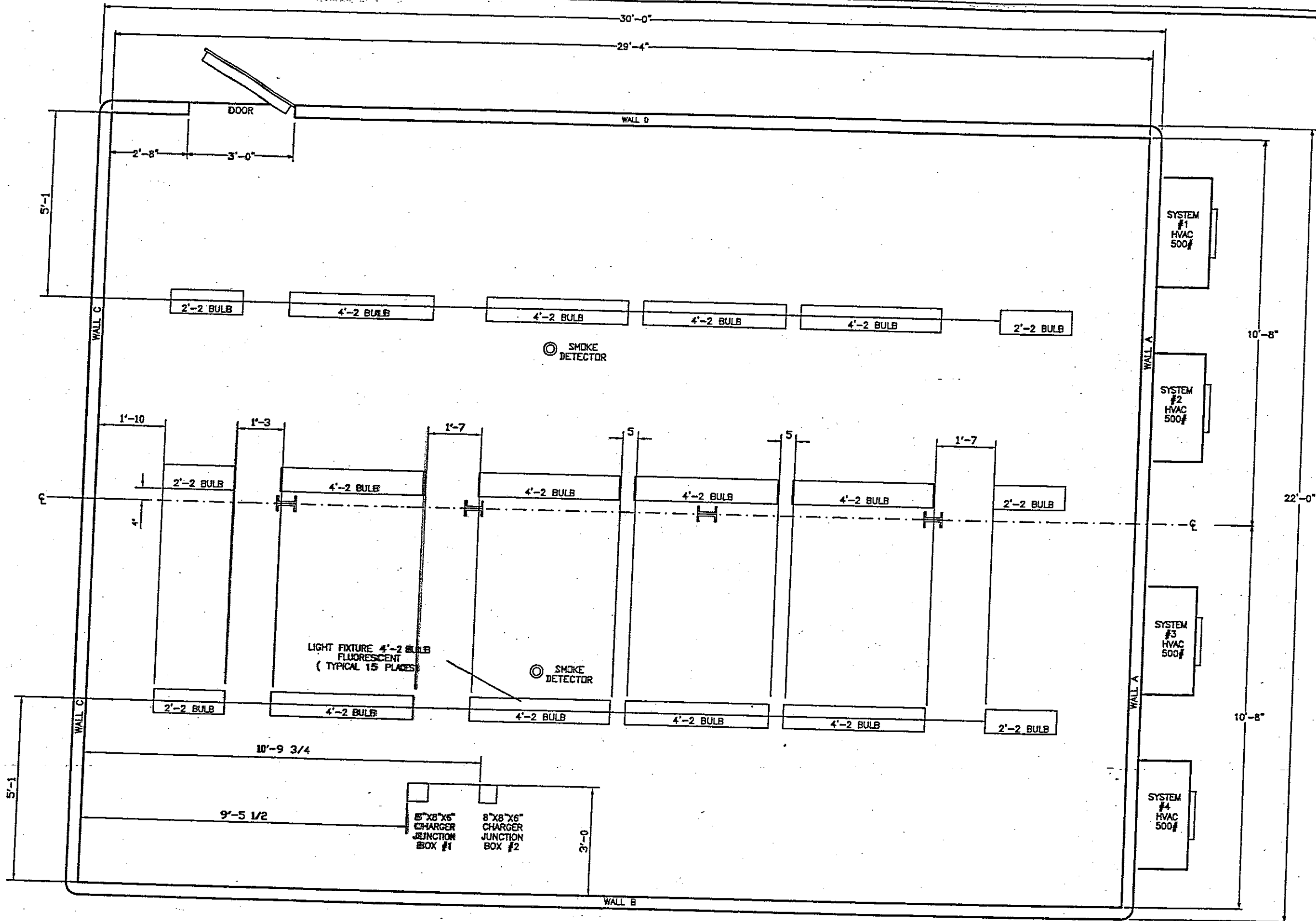
FLOOR PLAN
 22' x 30' x 9' Sht 8 of 15

THIS DOCUMENT AND THE INFORMATION CONTAINED HEREIN ARE THE SOLE PROPERTY OF FWT, INC. DUPLICATION OR DISSEMINATION OF THIS INFORMATION WITHOUT PRIOR WRITTEN CONSENT OF FWT, INC. IS PROHIBITED.



5750 East I-20
 Fort Worth, Texas 76119 U.S.A.
 (817) 255-3060 FAX (817) 255-8656

REV.	DATE	BY	INT.	DESCRIPTION
		RV		
SPECIFIC INFORMATION				CAD FILE: WA_JOBS\21386000 22x30\22x30-08.DWG\REVILLAN\23-JUN-2000\1E21
DRAWING TITLE				SCALE: NONE
22' x 30' (9' CLG) EQUIPMENT SHELTER				SHEET NO. 8 OF 15
FLOOR PLAN				DATE: 22-JUN-2000
				JOB NO. 22x30-08

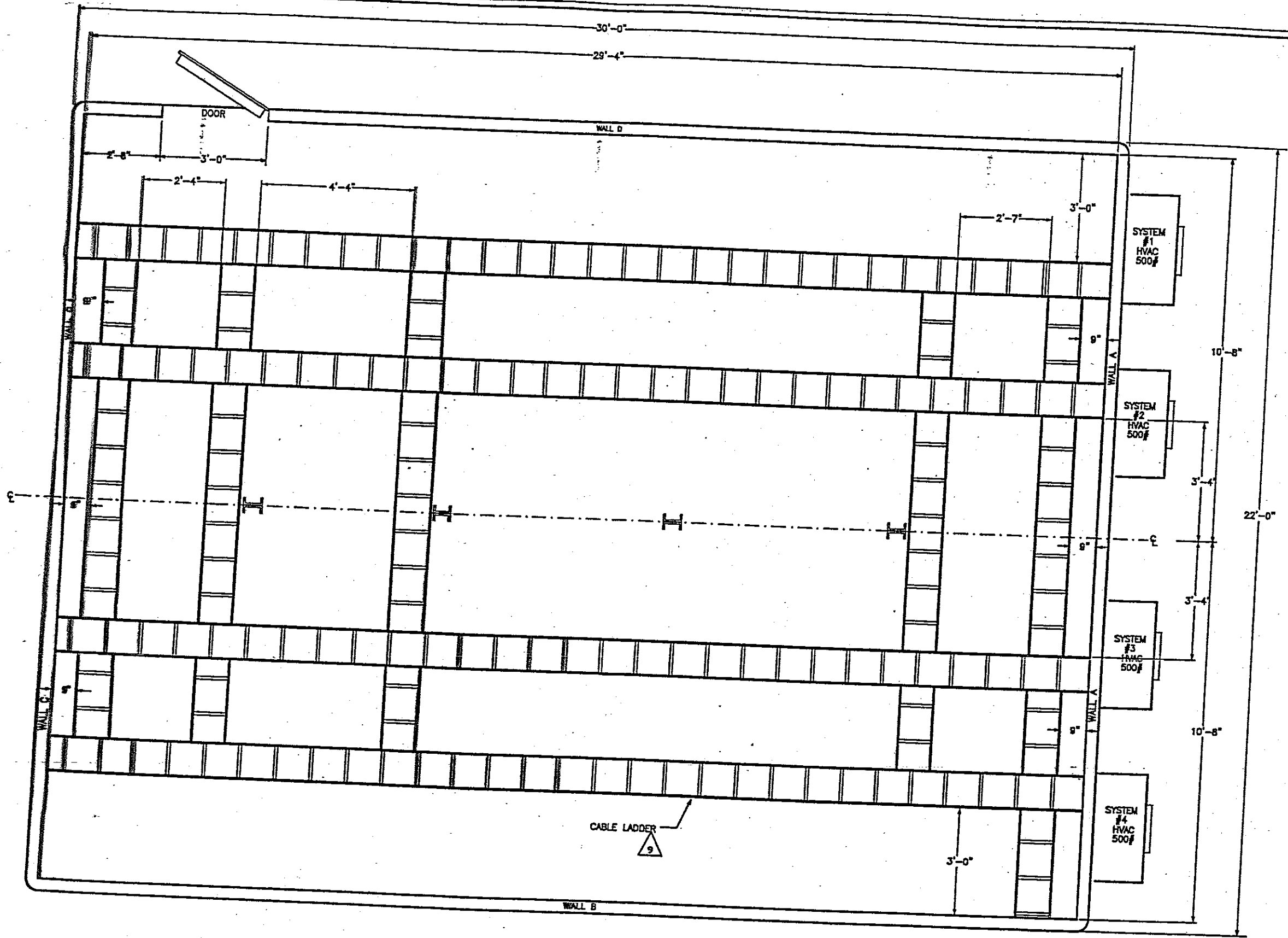


REFLECTED CEILING PLAN
 22' x 30' x 9' Sht 9 of 15

1 PROPRIETARY AND CONFIDENTIAL
 THIS DOCUMENT AND THE INFORMATION CONTAINED HEREIN
 ARE THE SOLE PROPERTY OF FWT, INC. DUPLICATION OR
 DISSEMINATION OF THIS INFORMATION WITHOUT PRIOR
 WRITTEN CONSENT OF FWT, INC. IS PROHIBITED.

FWT, Inc.
 5750 East I-20
 Fort Worth, Texas 76119 U.S.A.
 (817) 255-3060 FAX (817) 255-8656

REV.	DATE	BY	INIT.	DESCRIPTION
		RV		
DRAWING TITLE				SCALE: NONE
22' x 30' (9' CLG) EQUIPMENT SHELTER				SHEET NO. 9 OF 15
DATE: 22-JUN-2000				DRAWING NO. 22x30-09
JOB NO.				

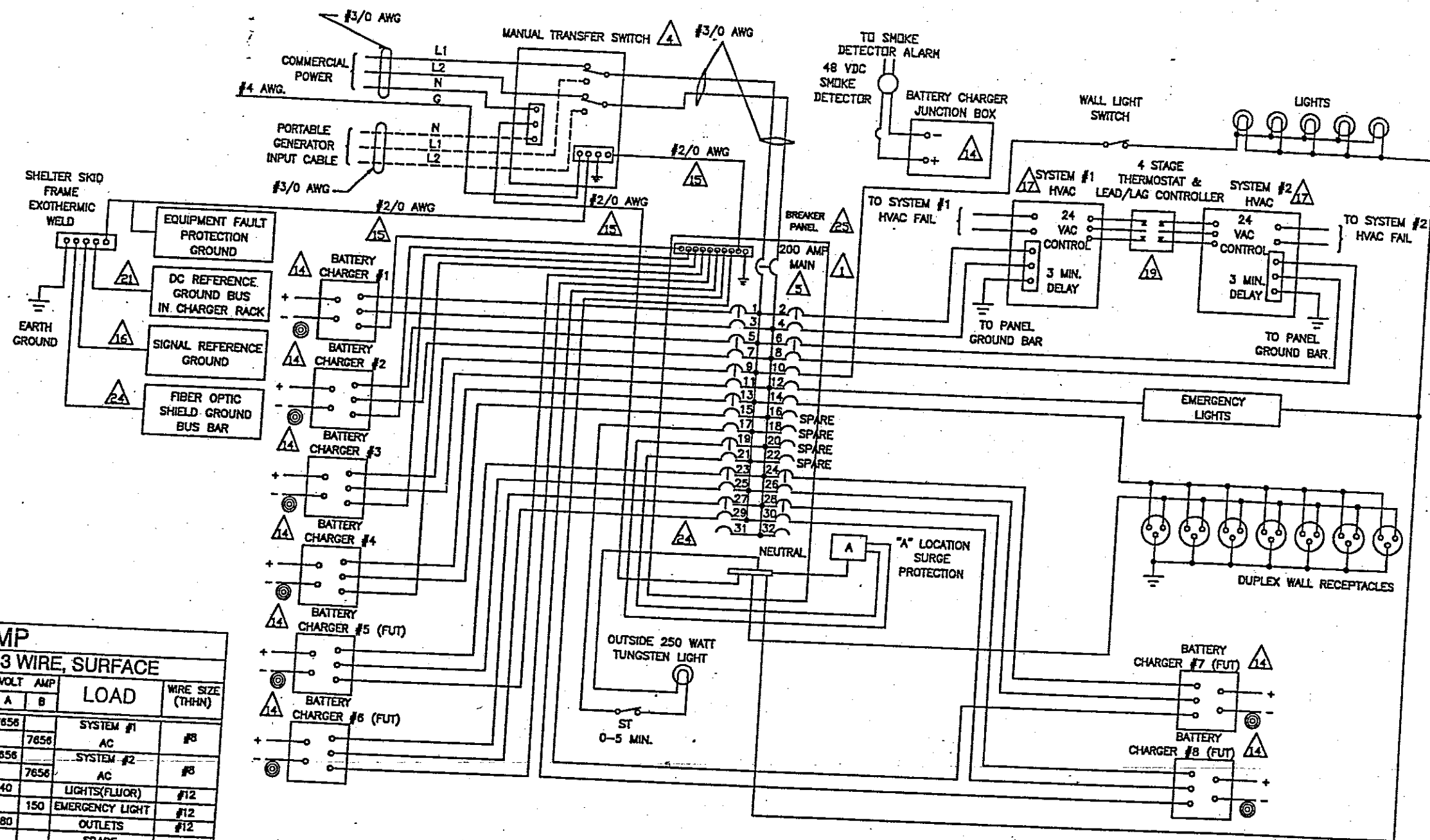


CABLE LADDER PLAN
 22' x 30' x 9' Sht 10 of 15

I PROPRIETARY AND CONFIDENTIAL. THIS DOCUMENT AND THE INFORMATION CONTAINED HEREIN ARE THE SOLE PROPERTY OF FWT, INC. REPLICATION OR DISSEMINATION OF THIS INFORMATION WITHOUT PRIOR WRITTEN CONSENT OF FWT, INC. IS PROHIBITED.

FWT, Inc.
 5750 East I-20
 Fort Worth, Texas 76119 U.S.A.
 (817) 255-3060 FAX (817) 255-8656

REV.	DATE	BY	INIT.	DESCRIPTION
		RV		
SPECIFIC INFORMATION				DESCRIPTION
22' x 30' (9' CLG) EQUIPMENT SHELTER				SCALE: NONE
DRAWING TITLE				DATE: 22-JUN-2000
CABLE LADDER PLAN				SHEET NO. 10 OF 15
JOB NO.				DRAWING NO. 22x30-10



PANEL SCHEDULE 200 AMP
PANEL - 200 AMP MAIN BKR, 120/240V, 1 PHASE, 3 WIRE, SURFACE

WIRE SIZE (THHN)	LOAD	VOLT AMP			BREAKER		LOAD				WIRE SIZE (THHN)	
		A	B	P	TRIP	A	B	BREAKER TRIP	VOLT AMP	LOAD		
#10	CHARGER #1	2880			2	30A	1					
#10	CHARGER #2	2880			2	30A	3					
#10	CHARGER #3	2880			2	30A	4					
#10	CHARGER #4	2880			2	30A	5					
#12	OUTSIDE LIGHT	250			1	20A	6					
#12	LOCATION "A" SURGE PROTECTOR				2	15A	7					
#10	CHARGER #5 (FUT)	2880			2	30A	8					
#10	CHARGER #6 (FUT)	2880			2	30A	9					
							10					
							11					
							12					
							13					
							14					
							15					
							16					
							17					
							18					
							19					
							20					
							21					
							22					
							23					
							24					
							25					
							26					
							27					
							28					
							29					
							30					
							31					
							32					

AMPERES PER PHASE 177.88 161.05

AC WIRING SCHEMATIC
PANEL NO. 1

I PROPRIETARY AND CONFIDENTIAL. THIS DOCUMENT AND THE INFORMATION CONTAINED HEREIN ARE THE SOLE PROPERTY OF FWT, INC. DUPLICATION OR DISSEMINATION OF THIS INFORMATION WITHOUT PRIOR WRITTEN CONSENT OF FWT, INC. IS PROHIBITED.

FWT, Inc.
 5750 East I-20
 Fort Worth, Texas 76119 U.S.A.
 (817) 255-3060 FAX (817) 572-0604

REV.	DATE	BY	INIT.	DESCRIPTION

DRAWN BY: RV CHECKED BY: CAD FILE: W:_005\21388000 22x30\22x30-11.DWG\RYLLIAN\23-JUN-2000\09:26 REV.

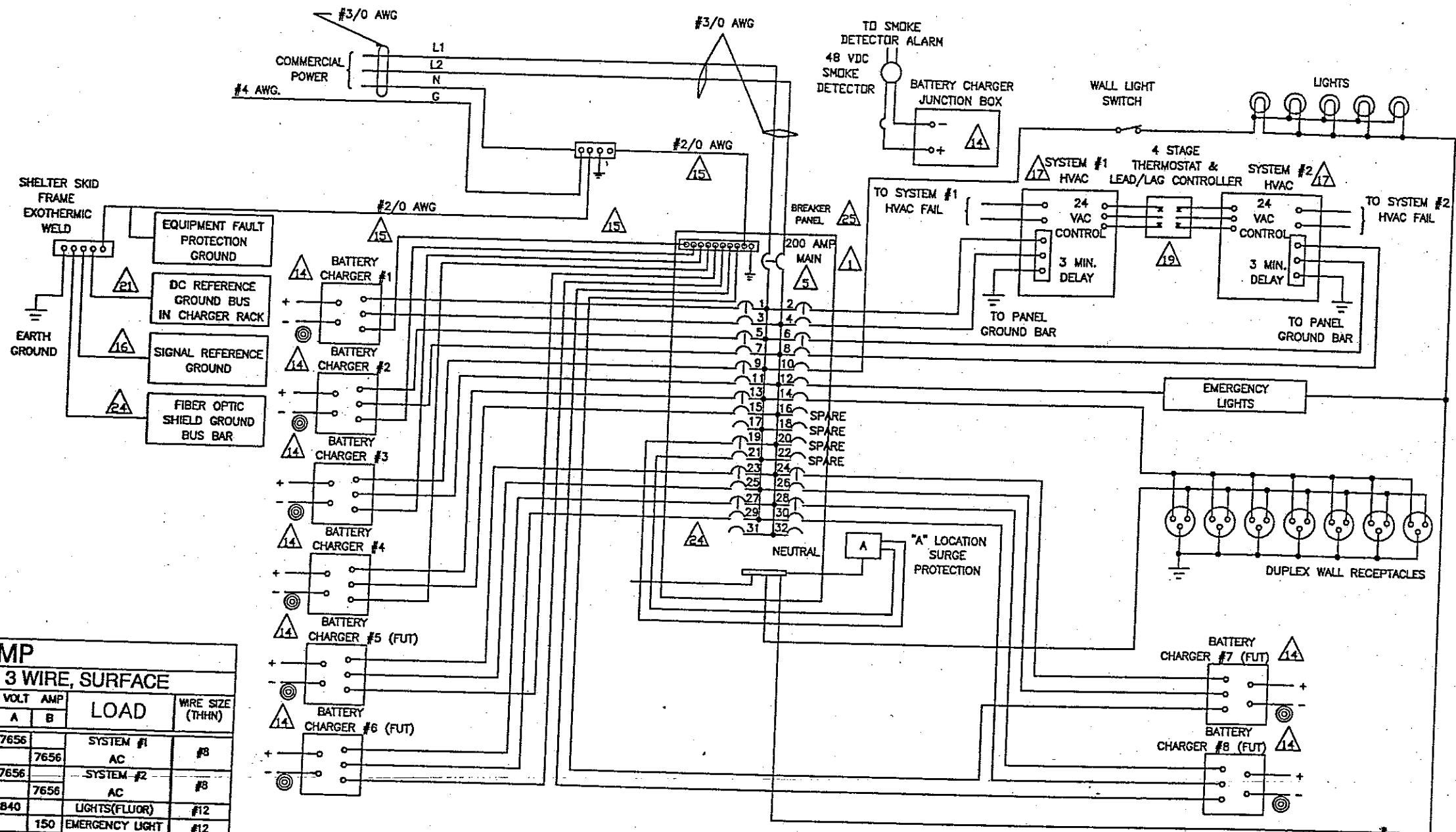
SPECIFIC INFORMATION: 22' x 30' (9' CLG) EQUIPMENT SHELTER

DRAWING TITLE: WIRING SCHEMATIC - PANEL NO. 1

SCALE: NONE SHEET NO. 11 OF 15

DATE: 22-JUN-2000

JOB NO. DRIVING NO. 22x30-11



AC WIRING SCHEMATIC
PANEL NO. 2

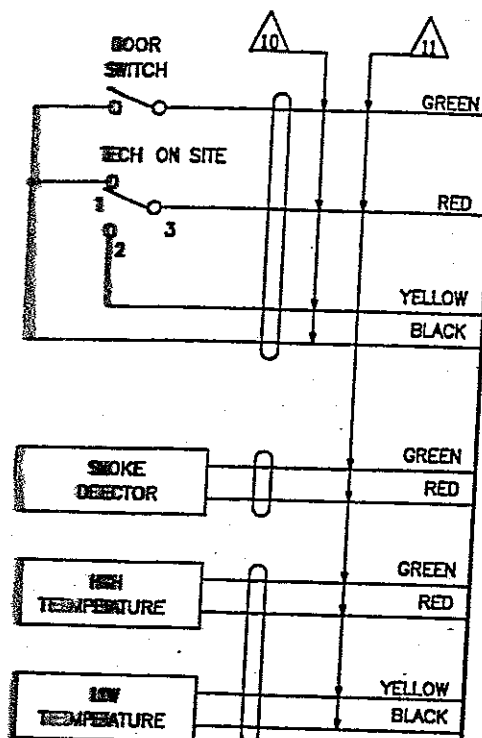
PANEL SCHEDULE 200 AMP												
PANEL - 200 AMP MAIN BKR, 120/240V, 1 PHASE, 3 WIRE, SURFACE												
WIRE SIZE (THIN)	LOAD	VOLT AMP		BREAKER	A		B		BREAKER		LOAD	WIRE SIZE (THIN)
		A	B		TRIP	A	B	TRIP	A	B		
#8	CHARGER #1	2880	2880	2 30A	1	2	50A	2	7656		SYSTEM #1 AC	#8
#8	CHARGER #2	2880	2880	2 30A	3	4	50A	2	7656		SYSTEM #2 AC	#8
#8	CHARGER #3	2880	2880	2 30A	5	6	20A	1	840		LIGHTS(FLOOR)	#12
#8	CHARGER #4	2880	2880	2 30A	7	8	20A	1	1080		EMERGENCY LIGHT	#12
	SPARE			1 20A	9	10	20A	1			OUTLETS	#12
#12	LOCATION "A" SURGE PROTECTOR			2 15A	11	12	20A	1			SPARE	
#8	CHARGER #5 (FUT)	2880	2880	2 30A	13	14	20A	1			SPARE	
#10	CHARGER #6 (FUT)	2880	2880	2 30A	15	16	30A	2	2880		CHARGER #7 (FUT)	#10
					17	18	30A	2	2880		CHARGER #8 (FUT)	#10
					19	20						
					21	22						
					23	24						
					25	26						
					27	28						
					29	30						
					31	32						

AMPERES PER PHASE	177.88	161.05
-------------------	--------	--------

1 PROPRIETARY AND CONFIDENTIAL
THIS DOCUMENT AND THE INFORMATION
CONTAINED HEREIN ARE THE SOLE PROPERTY OF
FWT, INC. DUPLICATION OR DISSEMINATION OF
THIS INFORMATION WITHOUT PRIOR WRITTEN
CONSENT OF FWT, INC. IS PROHIBITED.

FWT, Inc.
5750 East I-20
Fort Worth, Texas 76119 U.S.A.
(817) 255-3060 FAX (817) 572-0604

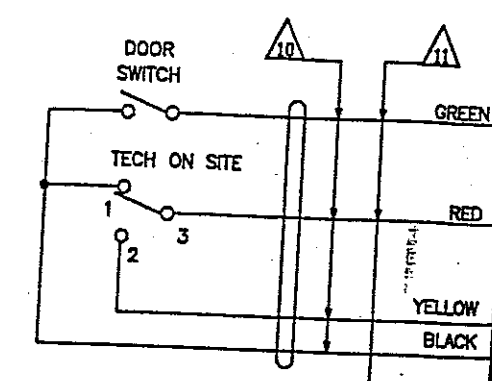
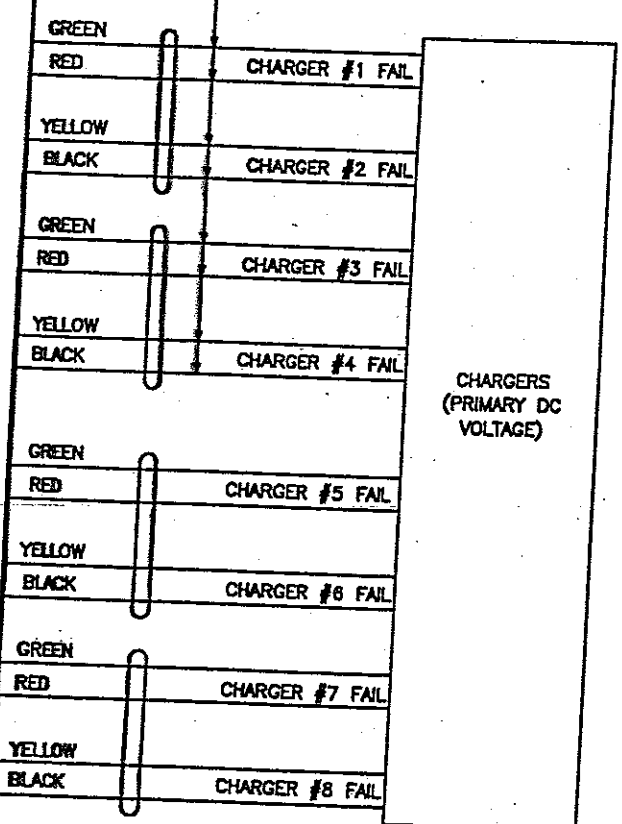
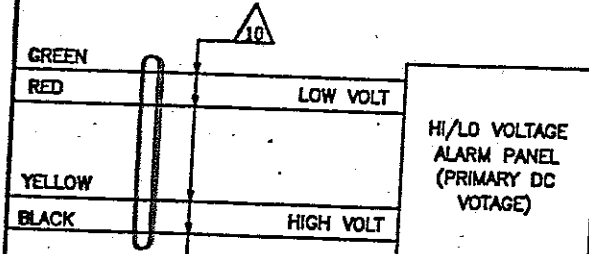
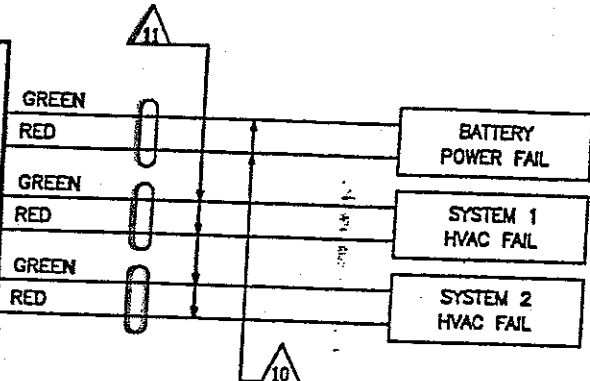
REV.	DATE	BY	INIT.	DESCRIPTION
DRWN BY:	RV	CHECKED BY:		CAD FILE: \\J0BS\21000-21999\21398000_22X30-12R1.DWG\11-JUL-2000\16:45
SPECIFIC INFORMATION	22' x 30' (9' CLG) EQUIPMENT SHELTER			SCALE: NONE
DRAWING TITLE	WIRING SCHEMATIC - PANEL NO. 2			DATE: 22-JUN-2000
				SHEET NO. 12 OF 15
				JOB NO. 21500000
				DRAWING NO. 22x30-12



HOFFMAN ENCLOSURE A12N124

△12 △13

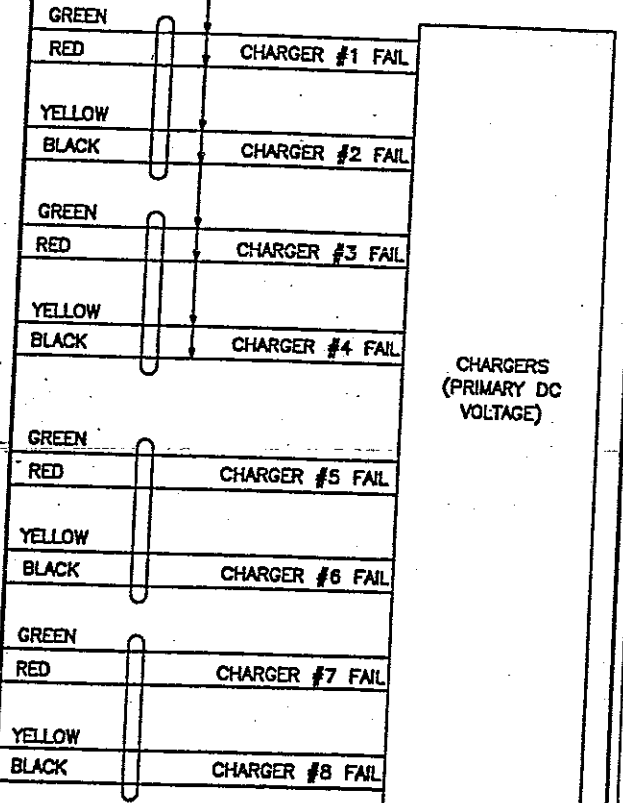
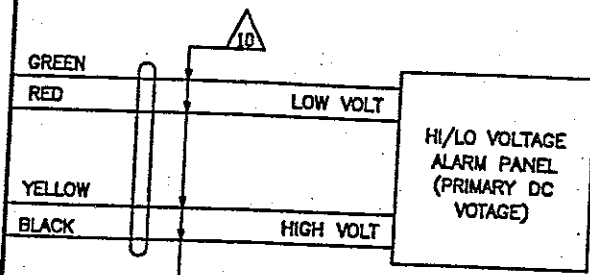
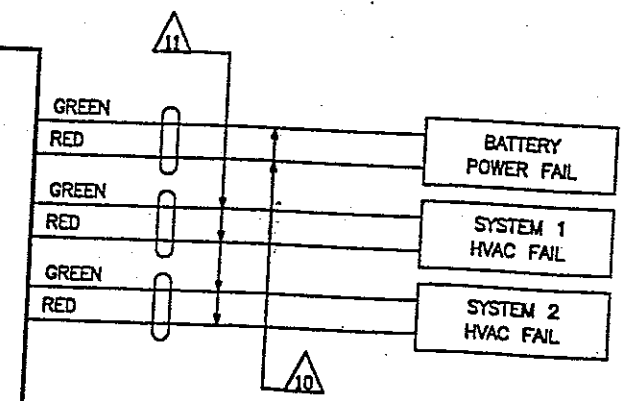
PANEL #1



HOFFMAN ENCLOSURE A12N124

△12 △13

PANEL #2



I PROPRIETARY AND CONFIDENTIAL I
THIS DOCUMENT AND THE INFORMATION
CONTAINED HEREIN ARE THE SOLE PROPERTY OF
FWT, INC. DUPLICATION OR DISSEMINATION OF
THIS INFORMATION WITHOUT PRIOR WRITTEN
CONSENT OF FWT, INC. IS PROHIBITED.

FWT, Inc.
5750 East I-20
Fort Worth, Texas 76119 U.S.A.
(817) 255-3060 FAX (817) 572-0604

REV.	DATE	BY	INIT.	DESCRIPTION
		RV		22' x 30' (9' CLG) EQUIPMENT SHELTER
DRAWING TITLE: ALARM SYSTEM WIRING DIAGRAM				
SCALE: NONE				SHEET NO. 13 OF 15
DATE: 22-JUN-2000				DRAWING NO. 22x30-13
JOB NO.				

11' WIDE BLDG.

Detail E

.050" Alum. Roofing Deck Is Riveted To IA-4235 w/3/16" Dia. Solid Alum. Rivets @ 6" O.C.

IA-4235 Cont. w/ Alum. Corners (No Splices)

See Note "A"

.040 Alum Wall Panel Riveted To IA-4235 And Wall Studs ("Z") w/ 3/16" Dia. Solid Alum. Rivets @ 3" Max.

Tapered Wood Joist #16 Ga. x 1" Penetration Steel Staples @ 6" o.c.

Plywood Fill 2" x 4" Wood (Cont.)

See Note "A"

5/16" x 1" M.B. Steel @ 12" o.c.

#120 Spiral Hardened Nails @ 12" o.c. (Thru Lip Of Extrusion Into 2" x 4" Cont.)

Alum. Wall "Z"

1/2" Plywood 5/16" Alum. Faced Plywood Glued To 1/2" Plywood

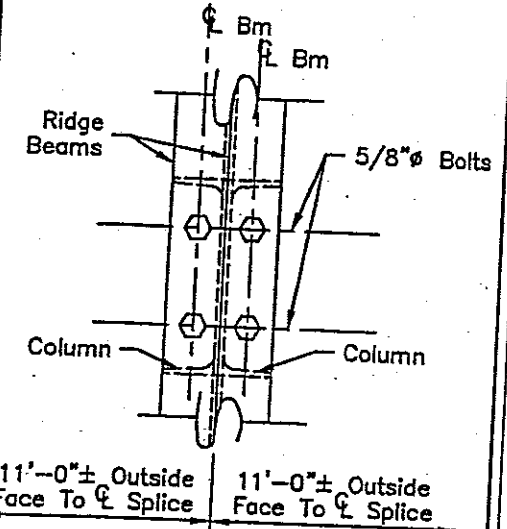
#6 Self-Tapping Screws Thru Lip Of Extrusion @ 6" o.c.

#6 Steel Self-Tapping Screws Thru "Z" @ 10" o.c.

1/2" Plywood

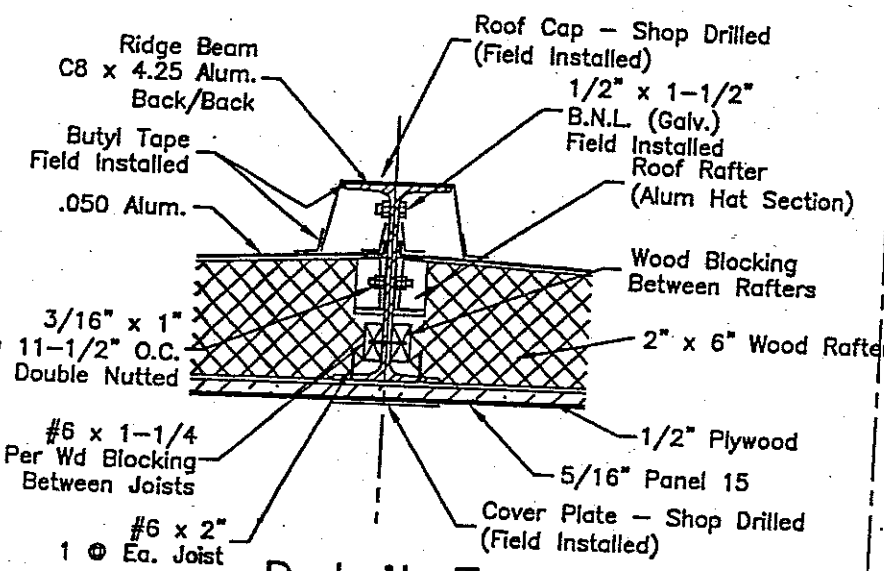
2" Insulation Foam (R=14.2)

2" Alum. "Z" Stud Spa. @ 11-1/2" o.c. Riveted To Extrusion Top & Bot. w/ 1 - 3/16" Dia. Solid Alum. Rivet



Section Thru Column Splice @ Roof

Section D



Detail E

Section Thru End Wall

5/16" Alum. Faced Plywood Glued To 1/2" Plywood

Base Molding

1/8" Vinyl Tile (Glued In Place)

W8 x 10

2 - 3/16" Dia. Solid Aluminum Rivets Ea. "Z" Stud To Lower Rail IA-4247 And To Roof Rail IA-4235 (4 Per Stud)

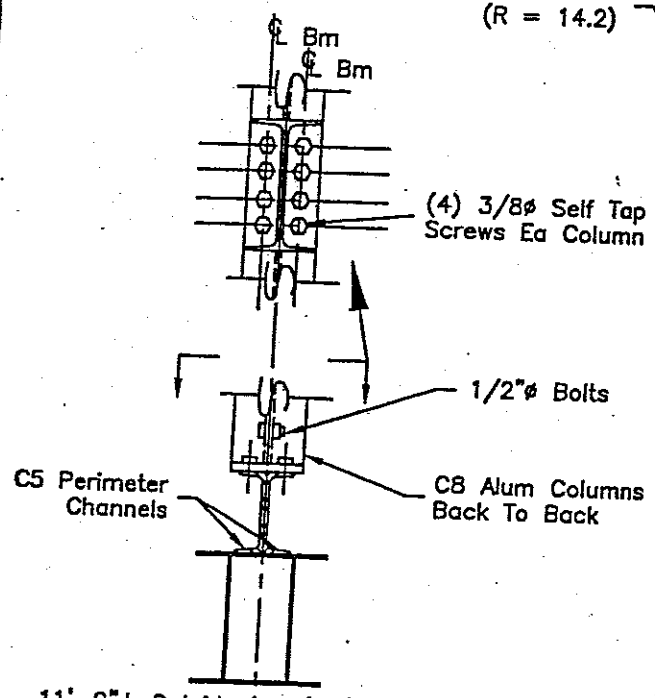
3/8" Dia. x 1" Self-Tap Screw (Steel) (12" o.c. Max.)

2 - 3/16" Dia. Solid Alum. Rivets Ea. "Z" Stud To Lower Rail IA-4247 And To Roof Rail IA-4235 (4 Per Stud)

Plastic Vinyl Tape Barrier

IA-4247 C5 x 6.7 @ Perimeter (Steel) Cont. Weld @ Corners

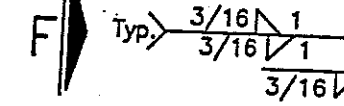
3/16" x 3/16" @ 36" O.C. 1/4" Dia. x 4" Self Tap Screw (Steel) (12" o.c. Max. Outside) (16" o.c. Max. Across) Note: Top Layer A.C. Plywood Stapled To Plywood Below @ 8" o.c. (.06 x 2") Steel



Section Thru Column Splice @ Floor

9' O.I.D.

W8 x 10



Section Thru Long Wall - Section C
31' Wide x 30' Long x 9' I.D. Maximum Shelter Dimensions

APA Rated Sheathing 32/16-15/32" Thick Exposure 1 - PSI-83 NETR GA 37 PRP 108 #16 Ga. x 1" Penetration Staples @ 6" o.c.

Alum. Faced Paneling (Panel 15)(Glued)

Contact Cement

3/4" C.D. Plywood Sealer

APA Rated Sheathing 48/24" - 23/32" Thick Exposure 1 PSI-83 NER GA397 PRP-108 PLACED Perpindicular To C3 @ 4.1

3/4" C.D. Plywood

2" x 4" Wood Frame (4'-0" O.C. Max.)

.030 Ga. Alum. Sheet Wrap Around @ Bot. & Staple To Wood Frame

C3 @ 4.1 @ 16" O.C. (Steel)

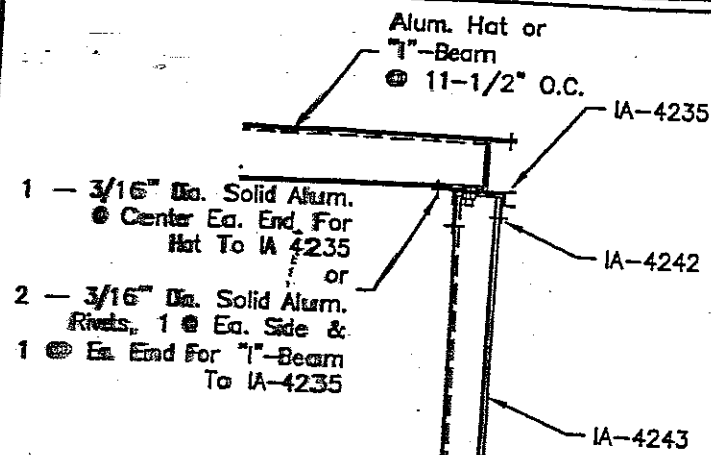
3" Std. Pipe Horizontal (Steel) @ 6'-0" Max.

W8 x 10

I PROPRIETARY AND CONFIDENTIAL
THIS DOCUMENT AND THE INFORMATION CONTAINED HEREIN ARE THE SOLE PROPERTY OF FWT, INC. DUPLICATION OR DISSEMINATION OF THIS INFORMATION WITHOUT PRIOR WRITTEN CONSENT OF FWT, INC. IS PROHIBITED.

FWT, Inc.
5750 East I-20
Fort Worth, Texas 76119 U.S.A.
(817) 255-3060 FAX (817) 572-0604

REV.	DATE	BY	INIT.	DESCRIPTION
1		RV		22' x 30' (9' CLG) EQUIPMENT SHELTER
DRAWING TITLE				22x30-14
SCALE				NONE
DATE				22-JUN-2000
JOB NO.				
SHEET NO.				14 OF 15
DRAWING NO.				22x30-14



Section A

DETAIL FOR ALUM. "HAT"
IA-4236 - 6105 T6 ROOF BOW

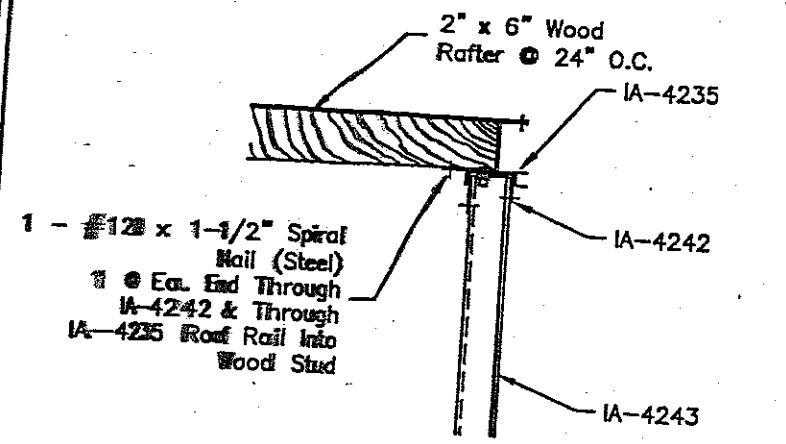
MFG. SPECIFICATIONS
 Ix = .302 IN 4
 Sx = .275 IN 3
 Iy = .468 IN 4
 Sy = .245 IN 3
 E = 1 x 10(7) psi
 Fy = 3.5 x 10(4) psi

DETAIL FOR ALUM. "Z"
IA-4243 - 6105 T6 WALL STUDS

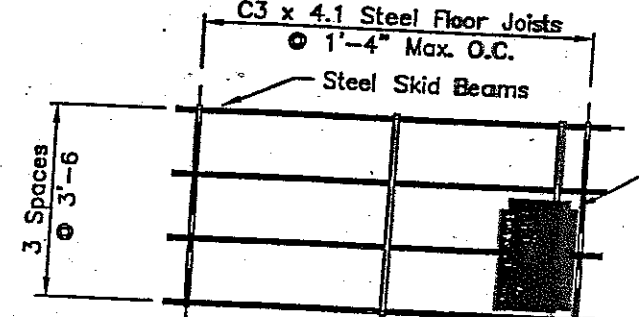
MFG. SPECIFICATIONS
 Ix = .214 IN 4
 Sx = .204 IN 3
 Iy = .069 IN 4
 Sy = .057 IN 3
 E = 1 x 10(7) psi
 Fy = 3.5 x 10(4) psi

DETAIL FOR ALUM. "I-BEAM"
IA-4237 - 6105 T6 ROOF BOW

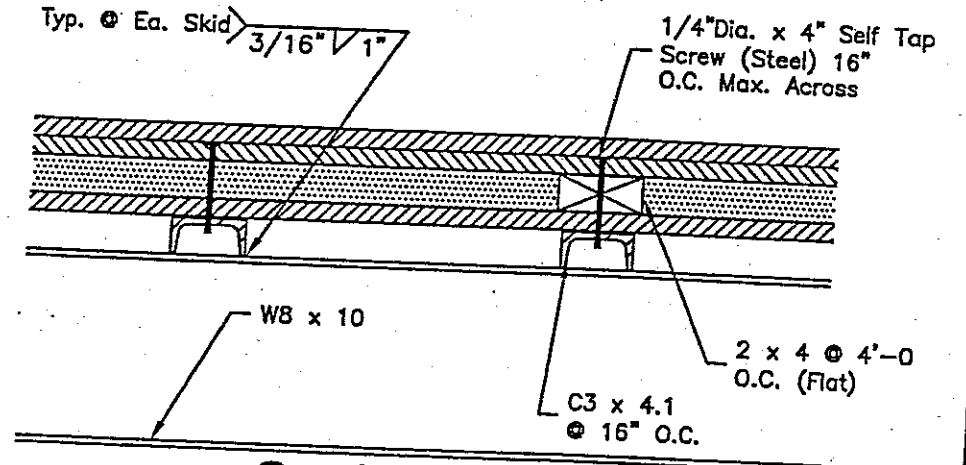
MFG. SPECIFICATIONS
 Ix = .274 IN 4
 Sx = .274 IN 3
 Iy = .042 IN 4
 Sy = .056 IN 3
 E = 1 x 10(7) psi
 Fy = 3.5 x 10(4) psi



Section B



Floor Construction Consists Of
 A Base Layer Of 3/4" Plywood Running w/Grain
 Perpendicular To The Floor Joists. Next Is A
 2" x 4" Frame For Insulation. Next Is A
 Second Layer Of 3/4" Plywood w/Grain Running
 Perpendicular To The Floor Joists Also. The
 Final Layer Of 3/4" Plywood Is Run w/grain
 Parallel To The Joists. Splices Do Not Overlap.

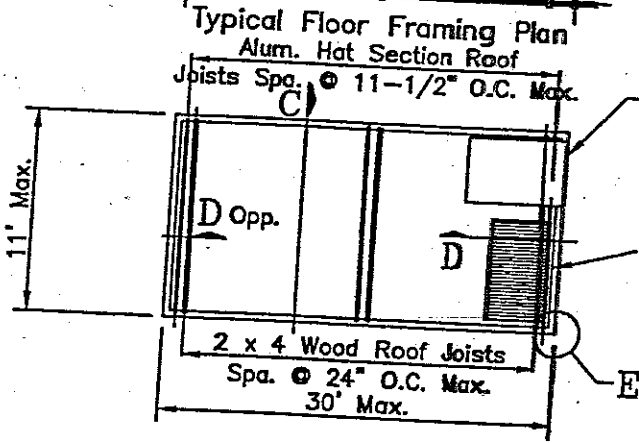


Section F

- GENERAL NOTES:**
1. Plastic Foam Insulation Board Meets Or Exceeds The Limitations Of UBC, SBC, And BOCA In Accordance With ASTM E-84. Maximum Smoke Developed Rating Of 450 Maximum Flame Spread Rating Of 75
 2. Wall Frames Are Composed Of .040 Exterior Aluminum Panels Riveted To Aluminum "Z" Studs Spaced @ 11-1/2".
 3. Roof Frame Is Composed Of .050 Aluminum Stretched Over Aluminum "Hat" Or "I" Beam Sections And Riveted At Perimeter.
 4. All Steel To Be A36, All Bolts To Be A307.
 5. For Wall, Floor, And Floor Live Loads See Cover Sheet.
 6. All Aluminum Type 6063-T5, 6105-T6 Or Better.

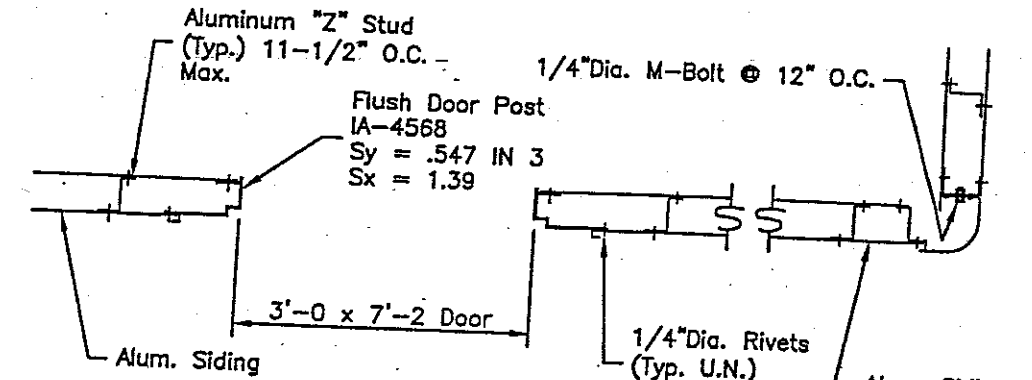
Note A

- FRAMING NOTES:**
1. Roof Joists, Both Alum. & Wood, Bear On Sidewalls.
 2. See Typical Construction Details For Connections And Methods Of Attachment.
 3. All Wood Used Structurally To Be Southern Pine #1 Dense Grade Or Better Fb = 1500 psi After Taper (Regraded).
 4. Floor Framing Is Not Considered For Strength In Allowable Floor Load Calc.



Roof .050 Mill Finished Aluminum Sheeting
 Ceiling Construction Consists Of
 A Base Layer Of 1/2" Plywood Running w/Grain
 Perpendicular To Roof Joists, Is Followed
 w/ 5/16" Alum. Faced Panel 15.

Typical Roof Framing Plan



PARTIAL SECTION THRU BLDG. "E"

11' Wide x 30' Long x 9' I.D. Maximum Shelter Dimensions

REV.	DATE	BY	INIT.	DESCRIPTION
		RV		
DRAWING TITLE				SCALE
22' x 30' (9' CLG) EQUIPMENT SHELTER				NONE
JOB NO.				SHEET NO.
22x30-15				15 OF 15

DATE: 22-JUN-2000

DRAWING NO. 22x30-15

I PROPRIETARY AND CONFIDENTIAL I
 THIS DOCUMENT AND THE INFORMATION
 CONTAINED HEREIN ARE THE SOLE PROPERTY OF
 FWT, INC. DUPLICATION OR DISSEMINATION OF
 THIS INFORMATION WITHOUT PRIOR WRITTEN
 CONSENT OF FWT, INC. IS PROHIBITED.

FWT, Inc.
 5750 East I-20
 Fort Worth, Texas 76119 U.S.A.
 (817) 255-3060 FAX (817) 572-0604