

PROJECT: LIGHTWEIGHT SHELTERS

OWNER:

LOCATION: SITE # TBD

SHELTER SIZE	RATING	MODEL NUMBER	APPROX. WEIGHT ±5%
8' x 8'	NON-FR	XP889/NR	2,880 LBS.

CAPACITY:  
WIND LOAD CAPACITY - 130 MPH  
FLOOR LOAD CAPACITY - 250 PSF (225 @ L/360)  
SNOW LOAD CAPACITY - 80 PSF  
SEISMIC ZONE: #4  
OCCUPANCY/USE: S-2  
CONSTRUCTION TYPE: VN  
MINIMUM SETBACKS: GREATER THAN 30' FROM COMMON OR ASSUMED PROPERTY LINE.

NOTES  
1. BUILDING NOT INTENDED FOR HUMAN OCCUPANCY.  
2. THIS BUILDING SHALL NOT BE LOCATED ON PROPERTY WHERE ACCESSIBILITY IS REQUIRED.  
3. PLUMBING FACILITIES ARE BASED ON LOCAL JURISDICTION.


EXTERIOR: EXPOSED AGGREGATE OR EQUIVALENT.

MANUFACTURER: PRECISION QUINCY CORP.  
1625 W. LAKE SHORE DR.  
WOODSTOCK, IL 60098

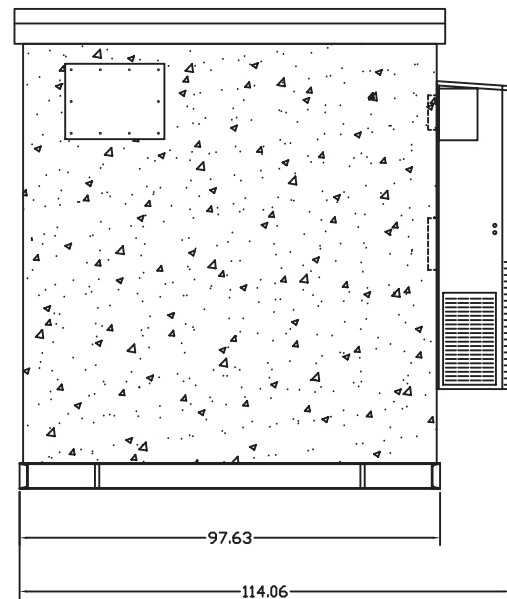
LABEL AND DATA LOCATION:  
PQ LABEL-ON THE ACCESS DOOR, INSIDE THE BUILDING  
STATE & DATA PLATE - ON THE LOAD CENTER

SERIAL NUMBER: TBD

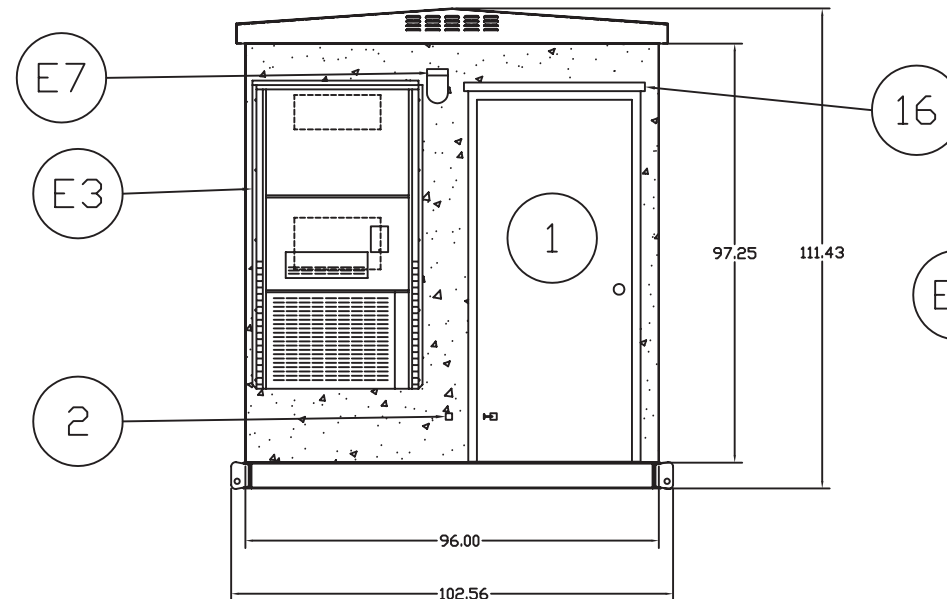
- DRAWINGS  
18447-00-8-0 PROJECT INFORMATION (REV. A - 11/14/07)  
18447-10-8-0 EXTERIOR ELEVATION (REV. A - 11/14/07)  
18447-20-8-0 INTERIOR GROUNDING & CABLE LAYOUT (2 SHEETS REV. A - 11/14/07)  
18447-40-8-0 VAC SCH. & VDC ALARM SCH. (3 SHEETS REV. A - 1/14/07)  
18447-50-8-0 BILL OF MATERIAL (REV. A - 11/14/07)  
18447-60-8-0 LIFTING & FOUNDATION RECOMMENDATIONS (REV. A - 11/14/07)

	<b>PRECISION QUINCY CORP.</b>			
	1625 W. LAKE SHORE DR., WOODSTOCK, IL 60098 PHONE: 815 338-2675, FAX: 815 338-2960			
CUSTOMER:				
ASSEMBLY: XP SHELTER				
TITLE: PROJECT INFORMATION				
SCALE:	ORDER #:	DWG #:	SHEET	
1"=1"	18447	18447-00-8-0	1 OF 1	

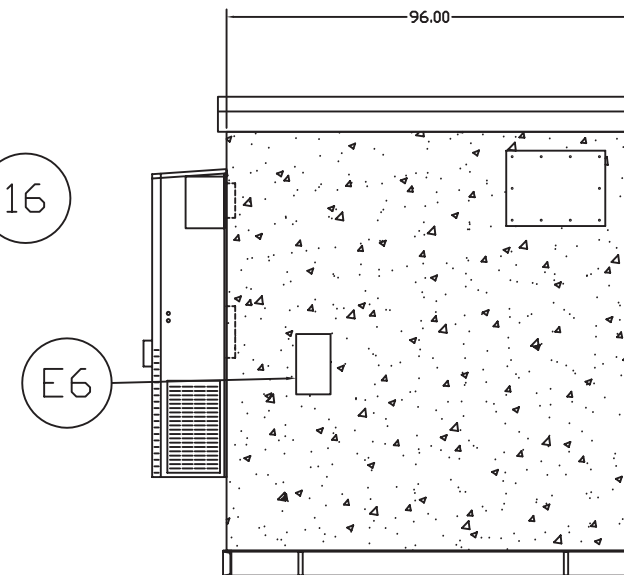
REV.	DESCRIPTION	BY	DATE
C			
B			
ACAD #:	PLOT SCALE: 1=1	BY: GTR	DATE: 11/14/07



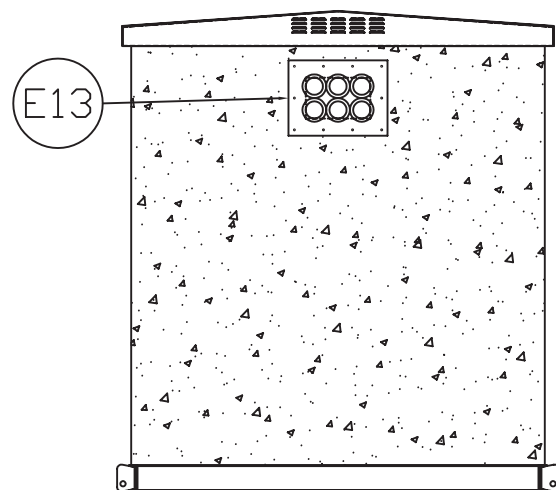
WALL "C"



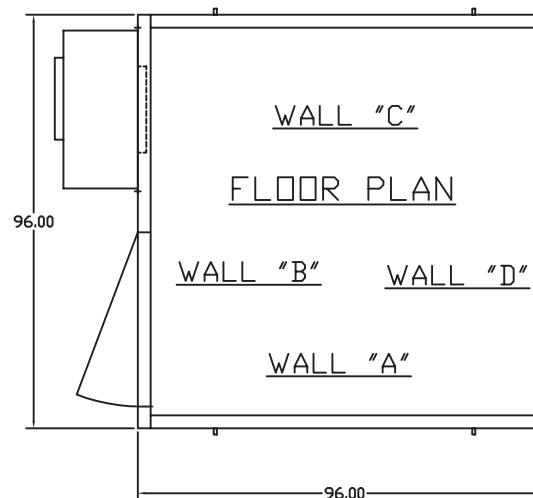
WALL "B"




WALL "A"



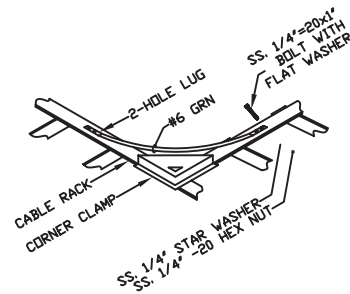
WALL "D"



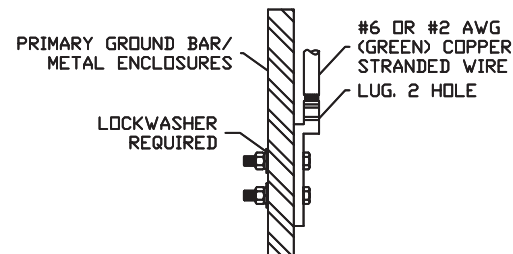
 <b>PRECISION QUINCY CORP.</b> 1625 W. LAKE SHORE DR., WOODSTOCK, IL 60098 PHONE: 815 338-2675, FAX: 815 338-2960	
CUSTOMER:	
ASSEMBLY: <b>XP 888</b>	
TITLE: <b>EXTERIOR ELEVATION</b>	
SCALE: <b>3/8"=1'</b>	ORDER # <b>18447</b> DWG # <b>18447-10-8-0</b> SHEET <b>1 OF 1</b>

REV.	DESCRIPTION	BY	DATE
B			

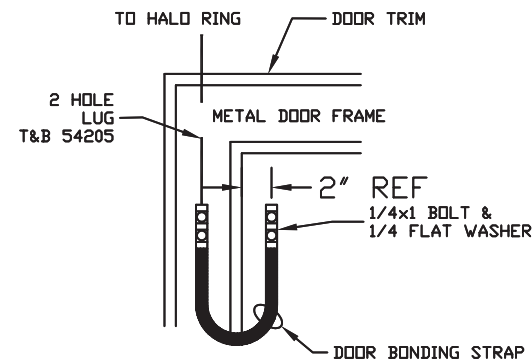
ACAD #: . PLOT SCALE: 1=32 GTR DATE: 11/14/07



**DETAIL #4**  
(ONE SIDE ONLY)  
CABLE LADDER GROUNDING  
EXTEND ACROSS EVERY LADDER-LADDER CONNECTION



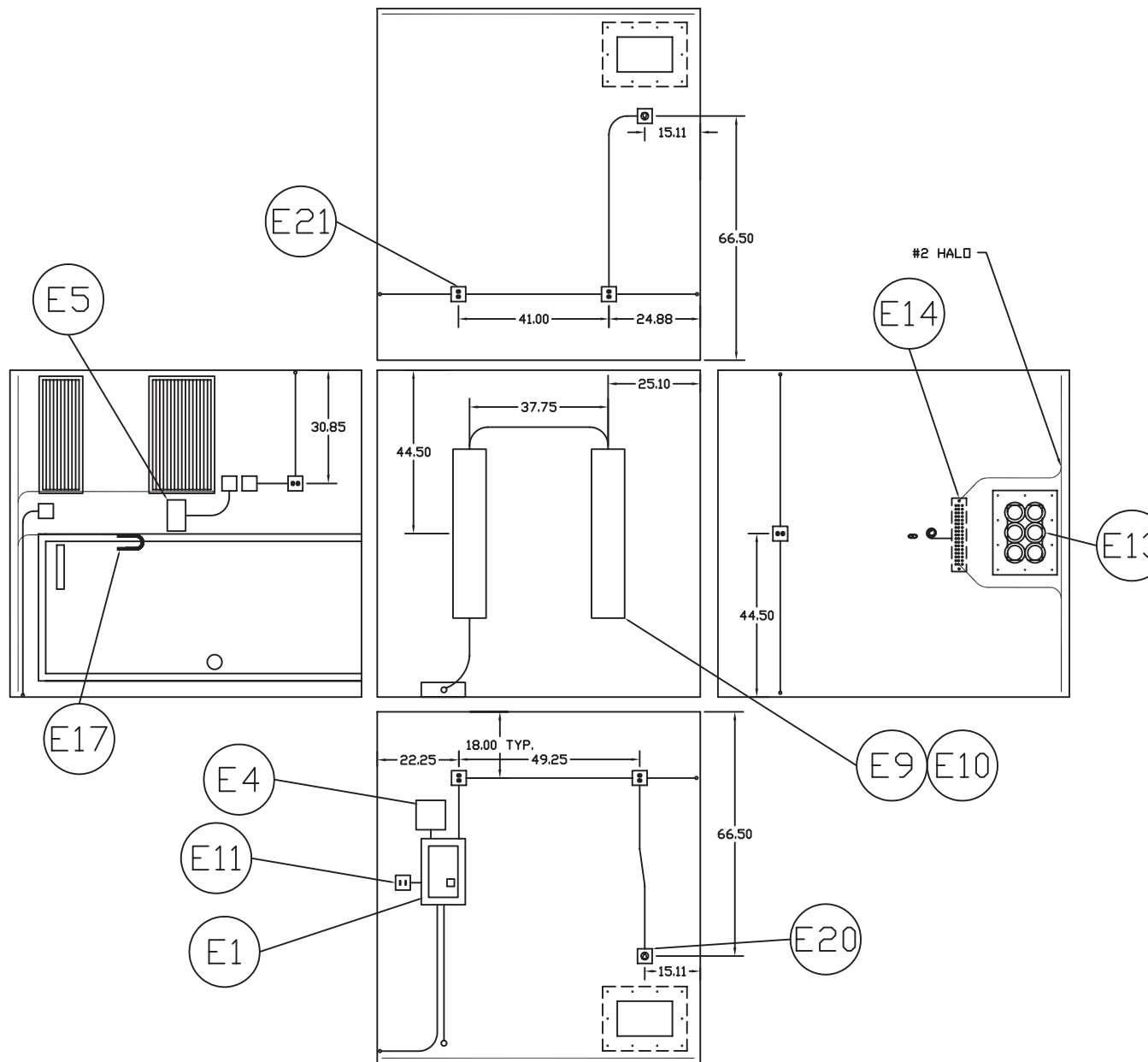
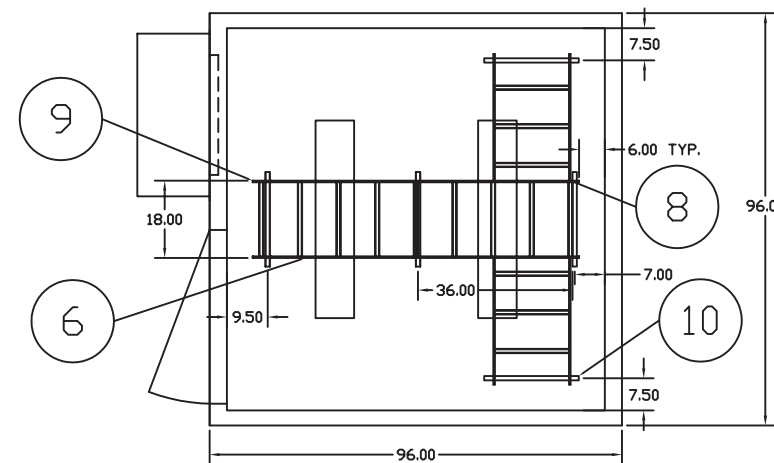
**DETAIL #2**  
#6 OR #2 AWG STRANDED TO  
A FLAT SURFACE



**DETAIL #3**  
DOOR BONDING STRAP DETAIL

**NOTES:**

1. HALO GROUND SHALL BE #2 SOLID TINNED COPPER WIRE.
2. MASTER GROUND BARS SHALL HAVE 20' OF #2 SOLID TINNED COPPER WIRE CAD WELDED TO THE BOTTOM OF THE BAR.
3. ALL BENDS MINIMUM 8" RADIUS.
4. APPLY ANTI-OXIDATION COMPOUND TO ALL CONNECTIONS.
5. 3/4" SCH. 40 PVC CAST AT 45° ANGLE.
6. ALL GROUNDING WIRES FOR HVAC GRILLES, BOXES LARGER THAN 4X4, DOOR, CABLE TRAY PLACE ON STANDOFFS, IF NECESSARY, TO ALLOW FOR PROPER INSTALLATION.
8. SHARP BENDS IN GROUNDING CONDUCTORS SHALL BE AVOIDED 90° BENDS SHALL NOT BE USED.
9. ALL GROUNDING CONDUCTORS SHALL BE KEPT AS SHORT AS POSSIBLE. THE SHORTEST PRACTICAL ROUTE SHALL BE CHOSEN WITH THE LEAST AMOUNT OF BENDS AND SPLICES.
10. ALL CONNECTIONS TO GROUND BARS SHALL BE WITH A 2-HOLE LUG UNLESS OTHERWISE SPECIFIED.
11. ALL SOLID WIRE SHALL USE A 2-HOLE LONG BARREL LUG.
12. REMOVE ALL PAINT BENEATH THE SURFACE OF GROUND LUGS.
13. GROUNDING OF CONDUIT TOGETHER WITH #6 AWG AND THE APPROPRIATE SIZED WEAVER CLAMP IS OPTIONAL.
14. DO NOT GROUND ELECTRICAL COMPONENTS.



**PRECISION QUINCY CORP.**  
1625 W. LAKE SHORE DR., WOODSTOCK, IL 60098  
PHONE: 815 338-2675, FAX: 815 338-2960

CUSTOMER: \_\_\_\_\_

ASSEMBLY: **XP 888**

TITLE: **INTERIOR ELEVATIONS**

SCALE: **3/8"=1'** ORDER #: **18447** DWG #: **18447-20-8-0**

REV.	DESCRIPTION	BY	DATE
C			
B			
ACAD #:	PLLOT SCALE: 1=32	BY: GTR	DATE: 11/14/07

## PANEL SCHEDULE

*MAIN: 100A CIRCUIT BREAKER VOLTAGE: 120/240V PHASE: 1PH WIRE: 3*

LOCATION	BRKR	WIRE	NO			NO	WIRE	BRKR	LOCATION
HVAC UNIT	20A	#12	1	⌋	⌋	2	#10	30A	SURGE ARRESTOR
"	"	"	3	⌋	⌋	4	"	"	"
INTERIOR LIGHTS (2)	15A	#12	5	⌋	⌋	6	#12	15A	EXTERIOR LIGHT
DUPLEX RECEPTACLE	20A	#12	7	⌋	⌋	8	#12	20A	DUPLEX RECEPTACLE
DUPLEX RECEPTACLE	20A	#12	9	⌋	⌋	10	#12	20A	DUPLEX RECEPTACLE
TWIST LOCK RECEPTACLE	30A	#12	11	⌋	⌋	12	#12	20A	DUPLEX RECEPTACLE
TWIST LOCK RECEPTACLE	30A	#12	13	⌋	⌋	14	#12	20A	DUPLEX RECEPTACLE
			15	⌋	⌋	16	#12	15A	AC CONTROLLER
			17	⌋	⌋	18			
			19	⌋	⌋	20			
			21	⌋	⌋	22			
			23	⌋	⌋	24			

This Drawing Contains Proprietary Information  
for the express purpose of Proposal Evaluation  
Property of **PRECISION QUINCY CORPORATION**  
This information may not be copied, duplicated, or distributed  
without written consent of **PRECISION QUINCY CORPORATION**

B	.	BY	.	DATE	.
REV.	DESCRIPTION	BY	DATE		
ACAD #:	PLOT SCALE: 1=1	BY: GTR	DATE: 11/14/07		

<b>PRECISION QUINCY CORP.</b> <small>1625 W. LAKE SHORE DR., WOODSTOCK, IL 60098 PHONE: 815 338-2675, FAX: 815 338-2960</small>				
CUSTOMER:				
ASSEMBLY: <b>XP 8' X 8'</b>				
TITLE: <b>PANEL SCHEDULE</b>				
CH. BY:	SCALE: 1=1	ORDER #:	DWG #:	SHEET
		18447	18447-40-8-0	1 OF 1

*MECHANICAL BILL OF MATERIALS / ENGINEERING*


ITEM	QTY.	PART NO.	DESCRIPTION	VENDOR NO.
1	1		PRE HUNG DOOR KIT 36' x 84' R.H.	-
2	1		DOOR STOP & HOLDER - AUSTIN	CH2445-B
3				-
4				V-67
5				
6	15'		CABLE LADDER	
7				
8	2		CABLE LADDER CORNER CLAMP (SET)	CC12
9	8		CABLE LADDER RUBBER BOOT	RFCH701
10	5		CABLE LADDER HANGER (YELLOW ZINC PLTD.)	-
11	10		J BOLT YELLOW ZINC PLATED	-
12				-
13				
14				
15				
16	1		6' CANOPY	
17				

*ELECTRICAL/HVAC BILL OF MATERIALS*

ITEM	QTY.	PART NO.	DESCRIPTION	VENDOR NO.
E1	(1)		LOAD CENTER	.
E2			QO TYPE CIRCUIT BREAKERS PER PANEL SCHEDULE	
E3	1		2 TON A/C WITH ECONOMIZER	AVP24ACA05C-1000
E4	1		SURGE SUPPRESSOR	
E5	1		THERMOSTAT	.
E6	1		100A EXTERIOR DISCONNECT	
* E7	1		EXTERIOR LIGHT, WATERPROOF, FAIL SAFE, 100W, W/ MOTION DETECTOR	
E8	1			
E9	4		4' FLUORESCENT BULB SYLVANIA 32 WATT	F032/730
E10	3		LIGHT FIXTURE FLUORESCENT 48" W/ WIRE GUARD-METALUX	SS232-120-EB81
E11	2		LIGHT SWITCH	-
E12				
* E13	1		WAVEGUIDE ENTRY PANEL MULTIPORT 4" DIA. W/CAP	.
* E14	2		GROUND BAR 20" X 4" X 1/4" HARGER	#GBIT14420J2TPQ
E15				
E16				
E17	1		GROUNDING STRAP-DOOR HARGER	#GS1262C
E18	1			
E19				.
E20	2		TWIST LOCKS 220V 30 AMP	-
E21	6		DUPLEX RECEPTACLE 20 AMP	-
E22				-
E23				
E24				
E25				
E26				

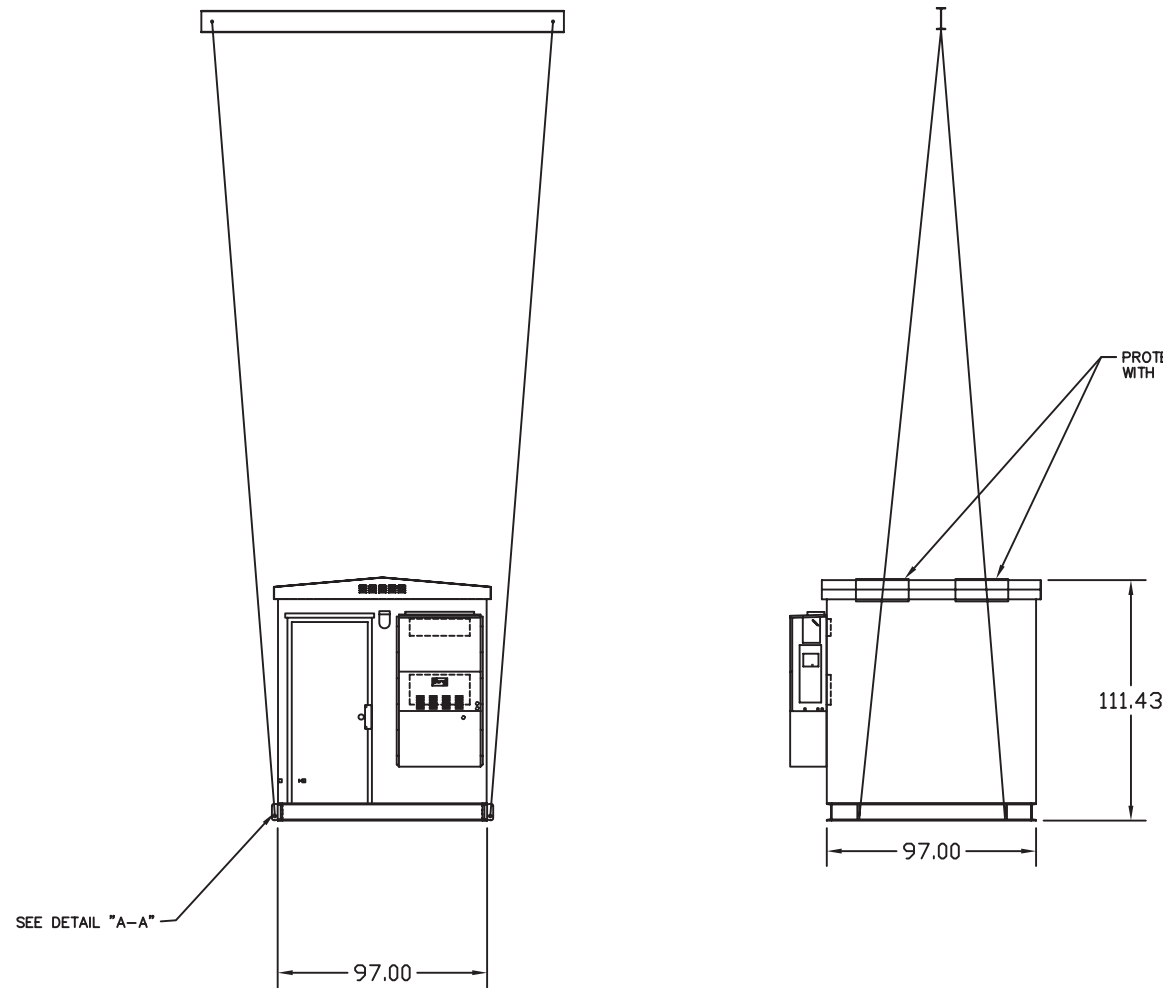
NOTES:  
 1) CUSTOMER IS TO CHOOSE LOCATION.  
 2) ITEMS WITH "\*" SEND LOOSE.

B	.	.	.
REV.	DESCRIPTION	BY	DATE
ACAD #:	PLOT SCALE: 1=1	BY: GTR	DATE: 11/14/07

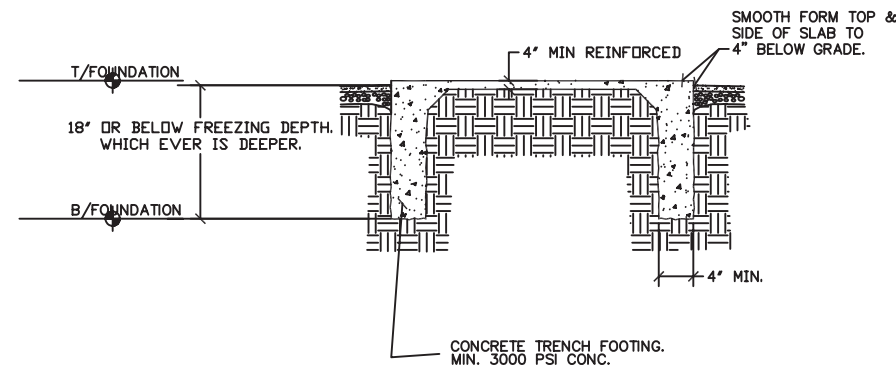
	<b>PRECISION QUINCY CORP.</b> 1625 W. LAKE SHORE DR., WOODSTOCK, IL 60098 PHONE: 815 338-2675, FAX: 815 338-2960		
	CUSTOMER:		
ASSEMBLY:		XP SERIES	
TITLE:		BILL OF MATERIAL	
SCALE:	ORDER #:	DWG #:	SHEET
NONE	18447	18447-50-8-0	1 OF 1

**BUILDING FOUNDATION AND ANCHORING NOTES**

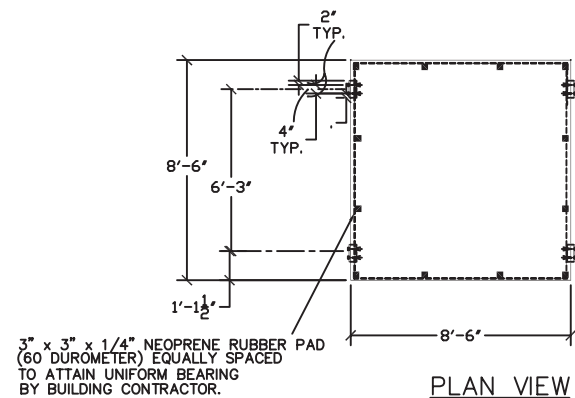
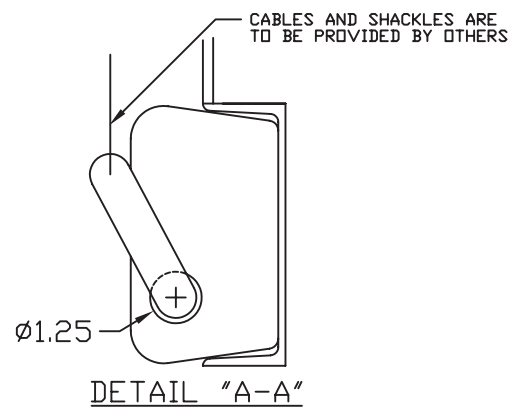
1. WORK SHALL BE IN ACCORDANCE WITH LOCAL CODES, SAFETY REGULATIONS AND UNLESS OTHERWISE NOTED, THE LATEST REVISION OF ACI 318, "BUILDING CODE REQUIREMENTS FOR REINFORCED CONCRETE". PROCEDURES FOR THE PROTECTION OF EXCAVATIONS AND UTILITIES SHALL BE ESTABLISHED PRIOR TO FOUNDATION INSTALLATION.
2. CONCRETE MATERIALS SHALL CONFORM TO THE APPROPRIATE STATE REQUIREMENTS FOR EXPOSED STRUCTURAL CONCRETE.
3. PROPORTIONS OF CONCRETE MATERIALS SHALL BE SUITABLE FOR THE INSTALLATION METHOD UTILIZED AND SHALL RESULT IN DURABLE CONCRETE FOR RESISTANCE TO LOCAL ANTICIPATED AGGRESSIVE ACTIONS. THE DURABILITY REQUIREMENTS OF ACI 318 CHAPTER 4 SHALL BE SATISFIED BASED ON THE CONDITIONS EXPECTED AT THE SITE. AS A MINIMUM, ALL CONCRETE SHALL DEVELOP A MINIMUM COMPRESSIVE STRENGTH OF F'C = 3000 P.S.I. AT 28 DAYS TESTING UNLESS NOTED OTHERWISE ON DRAWINGS.
4. MAXIMUM SIZE OF CONCRETE AGGREGATE SHALL NOT EXCEED 3/4 INCH; SIZE SUITABLE FOR INSTALLATION METHOD UTILIZED, OR ONE-THIRD CLEAR DISTANCE BEHIND OR BETWEEN REINFORCING.
5. ALL REINFORCING STEEL SHALL BE DEFORMED AND CONFORM TO THE REQUIREMENTS OF ASTM-A-615 GRADE 60, AND BE DETAILED IN ACCORDANCE WITH ACI-318 UNLESS OTHERWISE NOTED.
6. WELDING IS PROHIBITED ON REINFORCING STEEL AND EMBEDMENTS.
7. WELDED WIRE FABRIC FOR CONCRETE SHALL CONFORM TO ASTM-A-185.
8. MINIMUM CONCRETE COVER FOR REINFORCEMENT SHALL BE 3 INCHES UNLESS OTHERWISE NOTED.
9. CONCRETE COVER FROM TOP OF FOUNDATION TO ENDS OF VERTICAL REINFORCEMENT SHALL NOT EXCEED 3 INCHES NOR BE LESS THAN 2 INCHES.
10. APPROVED SPACERS SHALL BE ATTACHED INTERMITTENTLY TO REINFORCEMENTS TO INSURE 3" MINIMUM COVER FOR ALL REINFORCEMENT.
11. GENERAL CONTRACTOR SHALL CHECK WITH ARCHITECTURAL, BUILDING AND ELECTRICAL DRAWINGS, FOR OPENINGS, SLEEVES, ANCHORS, HANGERS AND OTHER ITEMS RELATED TO CONCRETE WORK AND SHALL ASSUME FULL RESPONSIBILITY FOR THE PROPER LOCATION BEFORE PLACING CONCRETE.
12. ALL CONCRETE SHALL BE VIBRATED.
13. ALL REINFORCING STEEL SHALL BE INSPECTED AND APPROVED BY THE ARCHITECT/ENGINEER PRIOR TO PLACEMENT OF CONCRETE. CONTRACTOR SHALL NOTIFY ARCHITECT/ENGINEER 48 HOURS BEFORE PLACING CONCRETE.
14. CONTRACTOR SHALL SUBMIT REINFORCING STEEL SHOP DRAWINGS FOR APPROVAL BY ARCHITECT/ENGINEER. THE SHOP DRAWINGS SHALL BE SUBMITTED IN THE FORM OF TWO (2) BLUELINE PRINTS.
15. CONCRETE SHALL BE SAMPLE TESTED AND TESTS SUBMITTED IN ACCORDANCE WITH ASTM-C-31 AND C-39. THREE CYLINDERS SHALL BE TAKEN FOR EACH DAY'S CONCRETE PLACEMENT.
16. READY MIX CONCRETE SHALL BE IN ACCORDANCE WITH ASTM-C-94.
17. REINFORCE ALL CONCRETE FOUNDATIONS AND PROVIDE TWO (2) #4-5'-0" HORIZONTAL CORNER BARS AT ALL INTERSECTING WALLS.
18. THE BOTTOM OF THE FOUNDATION MAY BE PLACED AGAINST UNDISTURBED SOIL. EXCAVATED MATERIALS, EXCEPT THAT CONTAINING ORGANICS, MAY BE PLACED AS STRUCTURAL BACKFILL TO BE COMPACTED IN 8 INCH MAXIMUM LAYERS TO 95% OF MAXIMUM DRY DENSITY AT OPTIMUM MOISTURE CONTENT IN ACCORDANCE WITH ASTM D698. EXCAVATED MATERIALS CONTAINING ORGANICS MUST BE REPLACED WITH ENGINEERED SOIL TO BE USED AS STRUCTURAL BACKFILL MATERIAL.
19. CONSTRUCTION PROJECT MANAGER SHALL BE NOTIFIED NO LESS THEN 48 HOURS IN ADVANCE OF CONCRETE POURS AND SHELTER PLACEMENTS.
20. SHIM APPROPRIATELY TO INSURE AN EVEN AND EQUALLY LOADED SUPPORT FOR SHELTER.
21. ANGLES FOR ANCHORING PROVIDED UPON REQUEST.



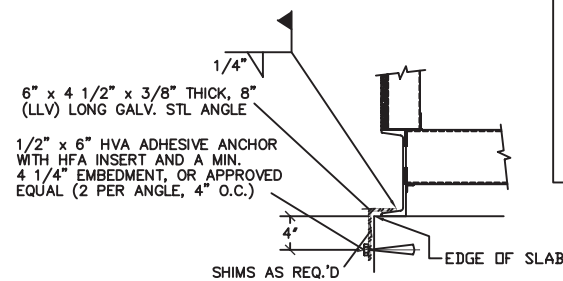
SEE DETAIL "A-A"



TYPICAL SLAB SECTION



SLAB SUPPORT



SLAB ATTACHMENT

FOUNDATION DESIGN DATA				
MODEL NUMBER	DEAD LOAD (BUILDING WEIGHT)	MAX. LIVE FLOOR LOAD 250 PSF	ROOF SNOW LOAD 80 PSF	MAX. TOTAL LBS.
XP0888/NFR	2,880 LBS.	16,000 LBS.	5,180 LBS.	24,060


ANCHORING DESIGN DATA	
MAX. UPLIFT PER SIDE (EMPTY BUILDING, 110 MPH WIND) = 3,000 LBS.	MAX. HORIZONTAL DRAG FORCE (EMPTY BUILDING, 110 MPH WIND) = 3,800 LBS.

**ATTENTION:** THIS DRAWING SHOWS SUPPORT FOR MAX. LOAD (27,650 LBS)

-SOIL CAPACITY CONSIDERED:  
 #2200 PSF - VERTICAL BEARING CAPACITY.  
 #200 PSF/FT OF DEPTH, MAX. 1000 PSF NET ALLOWABLE HORIZONTAL PRESSURE, (NOT FRICTION).

**NOTE:**  
 1. THIS DRAWING IS NOT INTENDED TO BE A FOUNDATION DESIGN; IT IS SUBMITTED ONLY AS A REFERENCE FOR MINIMUM SUPPORT REQUIRED AND ANCHORING.  
 2. THE DESIGN OF FOUNDATIONS SHALL BE PERFORMED BY A LICENSED ENGINEER OR ARCHITECT.  
 3. MANY SITE CONDITIONS WILL DIFFER FROM THE ABOVE. THE ENGINEER PERFORMING FOUNDATION DESIGN MUST REEVALUATE FOUNDATION ACCORDINGLY.  
 4. SPECIFIC FOUNDATION DESIGN SHOULD CONSIDER SPECIFIC SOIL CONDITIONS, FREEZING DEPTH, EFFECTIVE EQUIPMENT WEIGHT, SNOW, WIND, ETC.

- NOTES:**
1. WARNING! THIS SHELTER MUST BE UNLOADED LEVEL DUE TO HEAVY EQUIPMENT STAGED INSIDE THE BUILDING. OPEN THE DOOR TO DETERMINE THE EXACT LOCATION OF THE STAGED EQUIPMENT. EXERCISE CAUTION TO ENSURE THE PROPER UNLOADING OF THIS SHELTER. IF FOR ANY REASON DURING LIFTING THE SHELTER SHOWS TILTING TENDENCIES, BALANCE THE SHELTER APPROPRIATELY.
  2. BUILDING WEIGHT: (SEE TABLE SHEET 2) W/O CUSTOMER'S EQUIPMENT.
  3. 150" MINIMUM SPREADER BAR MUST BE USED TO AVOID BUILDING DAMAGE.
  4. USE APPROPRIATELY SIZED SHACKLES TO CONNECT LIFTING CABLE OR CHAINS TO SHELTER LIFTING LUGS.
  5. IF THE SHELTER OFF LOADING IS THE RESPONSIBILITY OF OTHERS IT SHOULD BE ACCOMPLISHED BY TRAINED AND EXPERIENCED PERSONNEL.
  6. THIS IS ONLY A RECOMMENDATION. IT IS THE RESPONSIBILITY OF THE CONTRACTOR TO DETERMINE THE SIZE OF ALL LIFTING HARDWARE AND EQUIPMENT USED TO HANDLE AND SET THE SHELTER.
  7. CUSTOMER TO REMOVE CARDBOARD FROM HVAC UNITS AND ADJUST THERMOSTAT "LEVEL" UPON START UP.



**PRECISION QUINCY CORP.**  
 1625 W. LAKE SHORE DR., WOODSTOCK, IL 60098  
 PHONE: 815 338-2675, FAX: 815 338-2960

CUSTOMER:	
ASSEMBLY:	XP SERIES - 8' X 8'
TITLE: LIFTING & FOUNDATION RECOMMENDATIONS	
BY: GTR	SCALE: 1/8"=1'
ORDER #: 18447	DWG #: 18447-60-8-0
ACAD #:	SHEET 1 OF 1

REV.	DESCRIPTION	REQ. BY:	BY:	CHK BY:	APPV BY:	DATE:
D						
C						
B						
ACAD #:		REQ. BY:	CHK BY:	APPV BY:	DATE:	11/14/07